

DALLAS, TEXAS

AL-742 (FAA)

RNAV (GPS) RWY 31

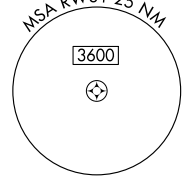
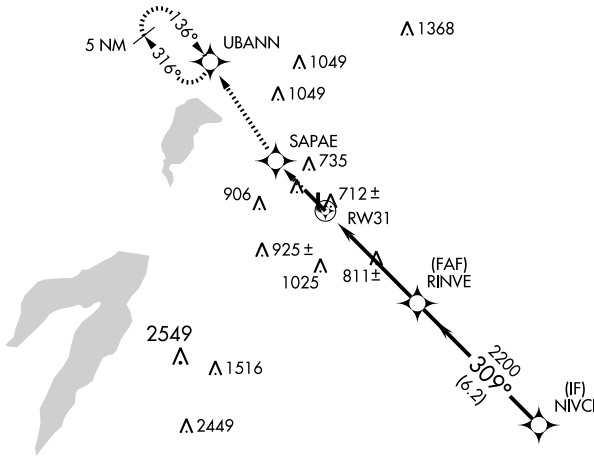
DALLAS EXECUTIVE (R.B.D)

WAAS Ch 42699 W31A	APP CRS 309°	Rwy Idg 6451 TDZE 658 Apt Elev 660
--	------------------------	---

▼ DME/DME RNP-0.3 NA. BARO-VNAV NA below -16°C (4°F). If local altimeter setting not received, use Dallas-Love Field altimeter setting and increase all DAs/MDAs 60 feet. BARO-VNAV and YDP NA when using Dallas-Love Field altimeter setting.

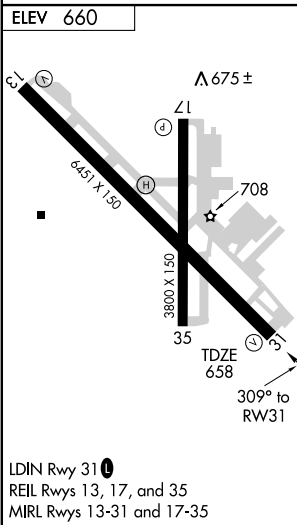
MISSED APPROACH: Climb to 2500 direct SAPAE and via 320° track to UBANN and hold.

ATIS 126.35	REGIONAL APP CON 125.2 343.65	EXECUTIVE TOWER ★ 127.25 (CTAF) 0 335.6	GND CON 119.475	CLNC DEL 118.625	UNICOM 122.95
-----------------------	---	---	---------------------------	----------------------------	-------------------------



SC-2, 22 OCT 2009 to 19 NOV 2009

SC-2, 22 OCT 2009 to 19 NOV 2009



RADAR REQUIRED

2500	SAPAE	TRK 320°	UBANN	RINVE	NIVCI	3000
↑	✧	✧	✧	✧	✧	✧
* LNAV only		* 1.2 NM to RW31		VGSI and RNAV Glidepath not coincident.		
1.2 NM		3.5 NM		6.2 NM		
CATEGORY	A	B	C	D		
LPV DA	908-1			250 (300-1)		
LNAV/VNAV DA	1073-1½			415 (500-1½)		
LNAV MDA	1080-1 422 (500-1)		1080-1¼ 422 (500-1¼)			
CIRCLING	1160-1½ 500 (500-1½)				1340-2¼ 680 (700-2¼)	
						GS 3.00° TCH 52

DALLAS, TEXAS
Orig 07242

32°41'N-96°52'W

DALLAS EXECUTIVE (R.B.D)

RNAV (GPS) RWY 31