

RNAV (GPS) RWY 17

DALLAS EXECUTIVE (R.B.D)

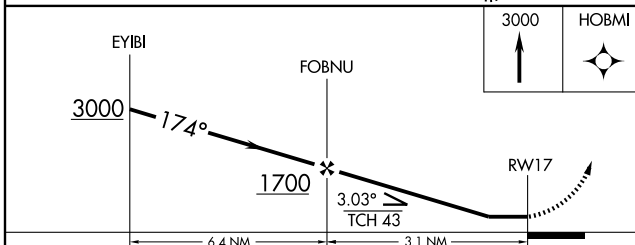
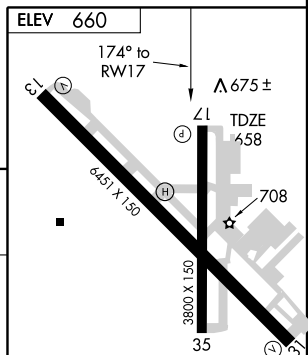
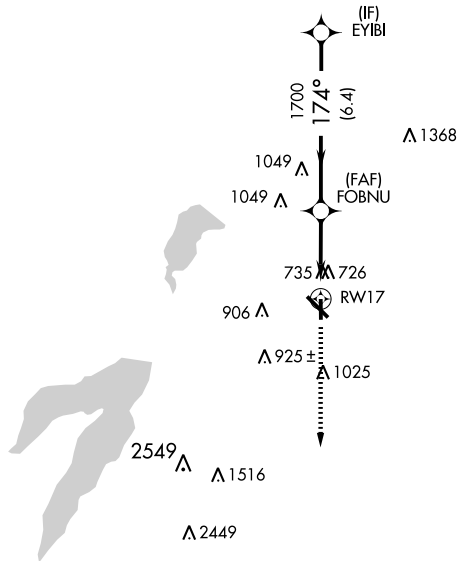
APP CRS 174°	Rwy Idg 3801
	TDZE 658
	Apt Elev 660

⚠ If local altimeter setting not received, use Dallas-Love Field altimeter setting and increase all MDAs 60 feet.
 ⚠ DME/DME RNP-0.3 NA.

MISSED APPROACH: Climb to 3000 direct HOBMI and hold.

ATIS 126.35	REGIONAL APP CON 125.2 343.65	EXECUTIVE TOWER ★ 127.25 (CTAF) 0 335.6	GND CON 119.475	CLNC DEL 118.625	UNICOM 122.95
-----------------------	---	---	---------------------------	----------------------------	-------------------------

RADAR REQUIRED



CATEGORY	A	B	C	D
LNNAV MDA	1100-1	442 (500-1)	1100-1¼ 442 (500-1¼)	1100-1½ 442 (500-1½)
CIRCLING	1160-1	500 (500-1)	1160-1½ 500 (500-1½)	1340-2¼ 680 (700-2¼)

LDIN Rwy 31
 REIL Rwys 13, 17, and 35
 MRL Rwys 13-31 and 17-35

SC-2, 22 OCT 2009 to 19 NOV 2009

SC-2, 22 OCT 2009 to 19 NOV 2009