

# JOE POOL THREE DEPARTURE

SL-742 (FAA)

DALLAS, TEXAS

ATIS 126.35  
 CLNC DEL  
 118.625  
 GND CON  
 119.475  
 EXECUTIVE TOWER ★  
 127.25 (CTAF) 335.6  
 REGIONAL DEP CON  
 125.2 343.65

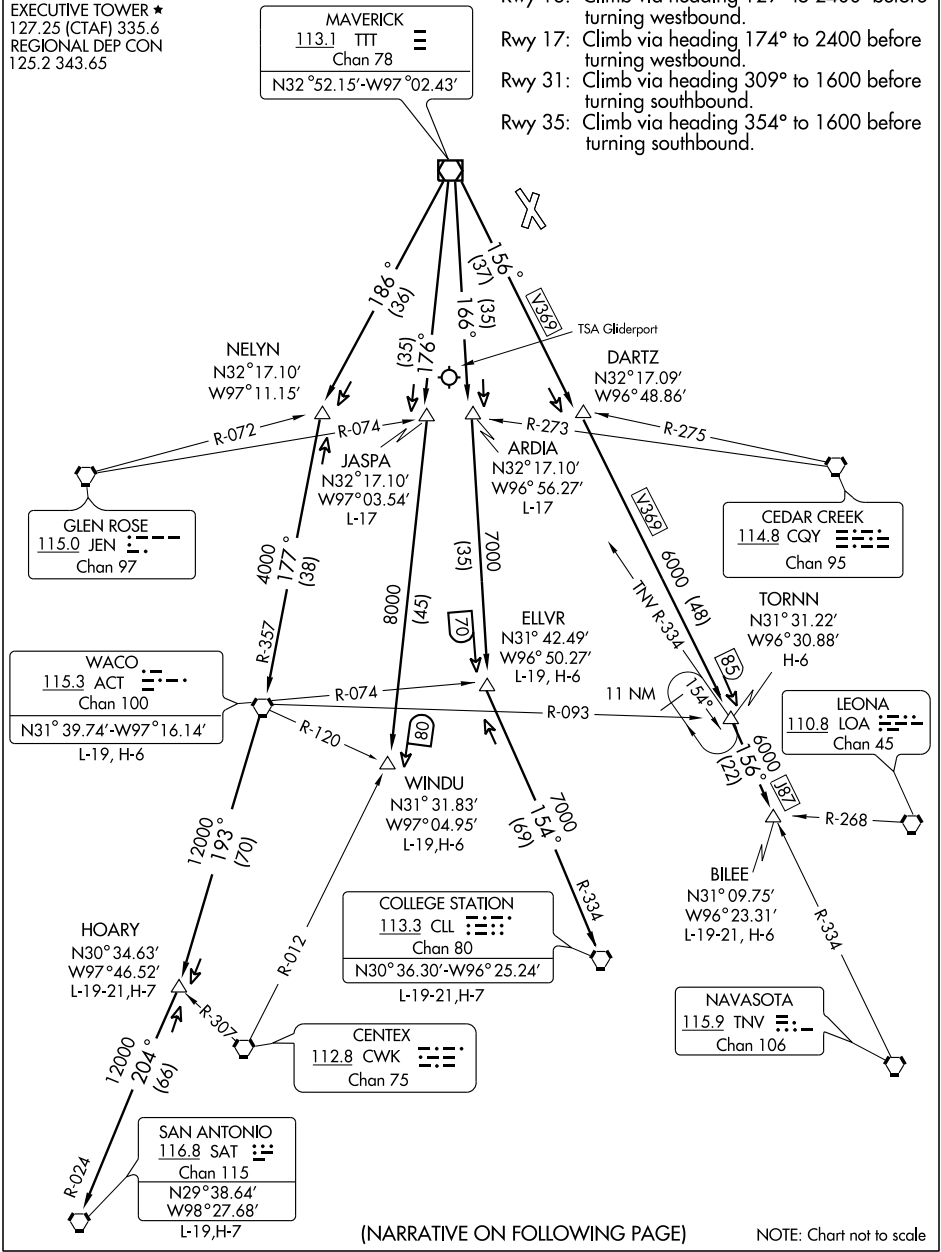
**TAKE-OFF MINIMUMS:** All runways standard.

**DEPARTURE PROCEDURE:**

- Rwy 13: Climb via heading 129° to 2400' before turning westbound.
- Rwy 17: Climb via heading 174° to 2400' before turning westbound.
- Rwy 31: Climb via heading 309° to 1600' before turning southbound.
- Rwy 35: Climb via heading 354° to 1600' before turning southbound.

SC-2, 22 OCT 2009 to 19 NOV 2009

SC-2, 22 OCT 2009 to 19 NOV 2009



(NARRATIVE ON FOLLOWING PAGE)

NOTE: Chart not to scale

# JOE POOL THREE DEPARTURE