

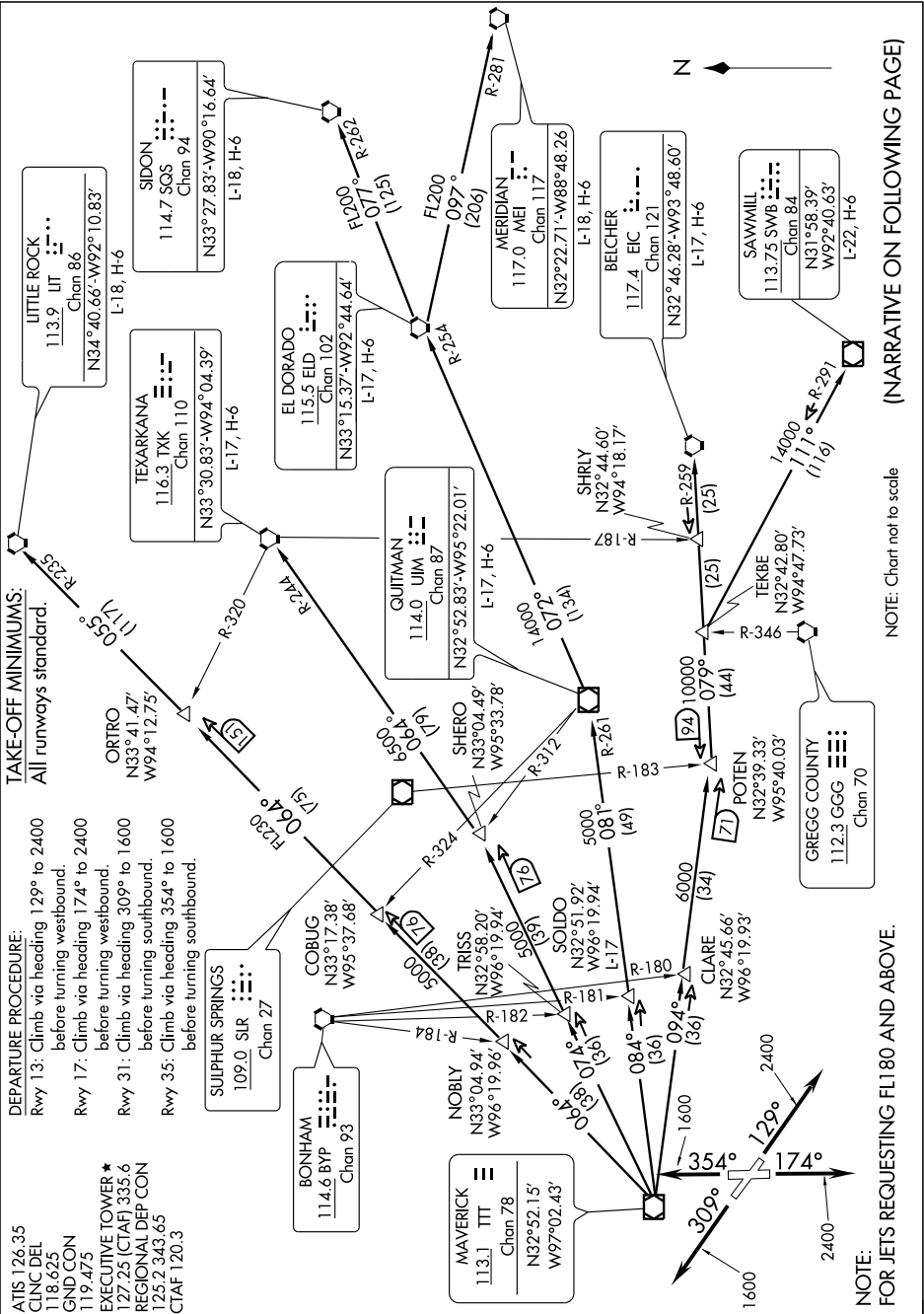
SC-2, 22 OCT 2009 to 19 NOV 2009

DEPARTURE PROCEDURE:
 Rwy 13: Climb via heading 129° to 2400 before turning westbound.
 Rwy 17: Climb via heading 174° to 2400 before turning westbound.
 Rwy 31: Climb via heading 309° to 1600 before turning southbound.
 Rwy 35: Climb via heading 354° to 1600 before turning southbound.

EXECUTIVE TOWER *
 127.25 (CTAF) 335.6
REGIONAL DEP CON
 125.9 343.65
 CTAF 120.3

ATIS 126.35
 CLNC DEL 118.625
 GND CON 119.475

TAKE-OFF MINIMUMS:
 All runways standard.



(NARRATIVE ON FOLLOWING PAGE)

NOTE: Chart not to scale

SC-2, 22 OCT 2009 to 19 NOV 2009

NOTE:
 FOR JETS REQUESTING FL180 AND ABOVE.