

# RNAV (GPS) RWY 19

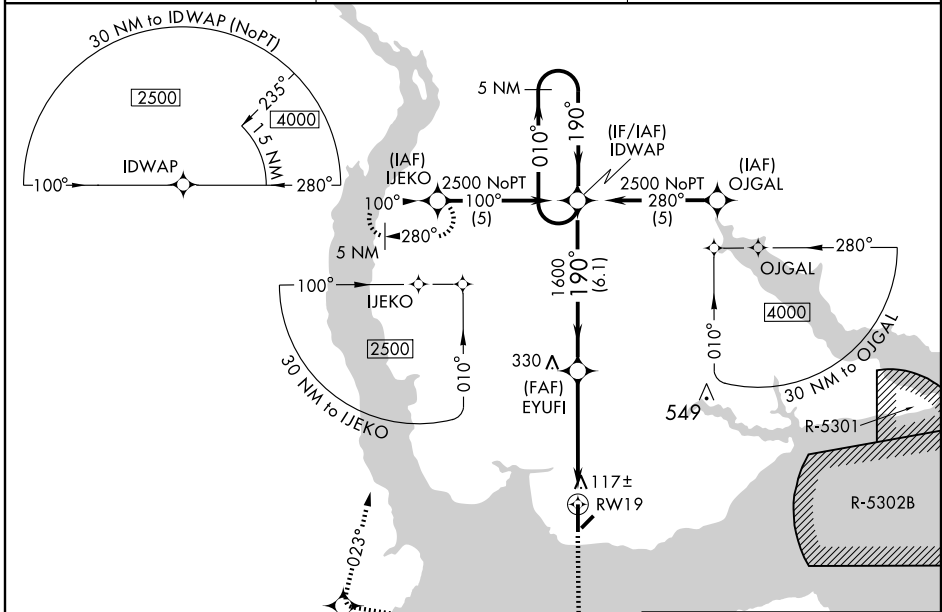
EDENTON/ NORTHEASTERN RGNL (E/D E)

WAAS CH <b>90503</b> <b>W19A</b>	APP CRS <b>190°</b>	Rwy Idg TDZE Apt Elev	<b>6000</b> <b>20</b> <b>20</b>
--	------------------------	-----------------------------	---------------------------------------

**⚠** Baro-VNAV NA when using Elizabeth City altimeter setting. If local altimeter setting not received, use Elizabeth City altimeter setting and increase all DAs/MDAs 60 feet. For uncompensated Baro-VNAV systems, LNAV/VNAV NA below -15°C (5°F) or above 48°C (118°F). DME/DME RNP-0.3 NA. Visibility reduction by helicopters NA.

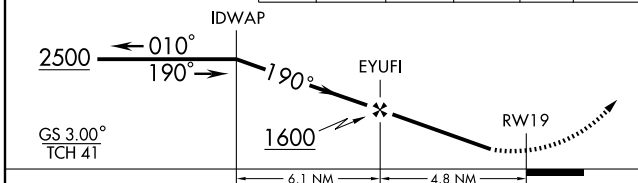
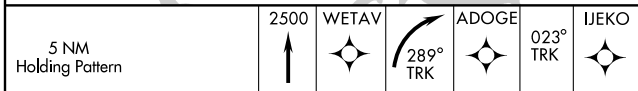
**MISSED APPROACH:** Climb to 2500 direct WETAV and right turn via 289° track to ADOGE and via 023° track to IJEKO and hold.

AWOS-3 <b>121.125</b>	WASHINGTON CENTER <b>123.85 323.0</b>	UNICOM <b>123.0</b> (CTAF) <b>📻</b>
--------------------------	--	--



SE-2, 22 OCT 2009 to 19 NOV 2009

SE-2, 22 OCT 2009 to 19 NOV 2009



CATEGORY	A	B	C	D
LPV DA		362-1¼	342 (400-1¼)	
LNAV/ DA VNAV		407-1½	387 (400-1½)	
LNAV MDA	380-1	360 (400-1)		380-1¼ 360 (400-1¼)
CIRCLING	520-1	500 (500-1)	520-1½ 500 (500-1½)	580-2 560 (600-2)

