

TACAN LRF Chan 29	APCH CRS 056°	Rwy Idg TDZE 308 Arpt Elev 311
-----------------------------	-------------------------	---

AL-738 [USAF]

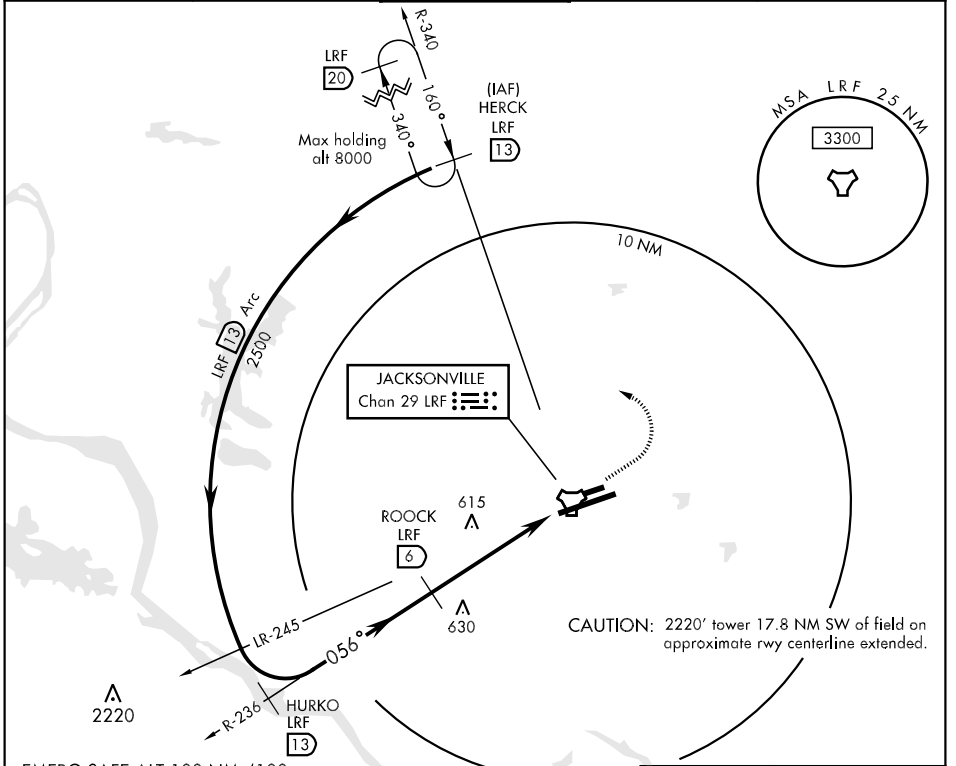
LITTLE ROCK AFB (KLRF)

▼ * When ALS inop, increase CAT AB RVR to 50 and vis to 1 mile, CAT C vis to 1½ miles, CAT D vis to 1¾ miles and CAT E vis to 2 miles.



MISSED APPROACH: Climb to 1300 then turn left climbing to 3000, intercept LRF TACAN R-340 to 13 DME (HERCK) and hold.

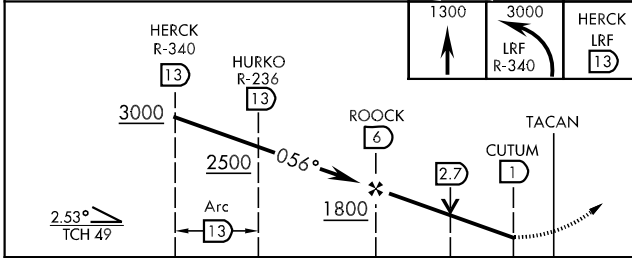
ATIS ★ 119.175 251.1	LITTLE ROCK APP CON 119.5 306.2	LITTLE ROCK TOWER 120.6 269.075	GND CON 132.8 275.8	CLNC DEL 253.5
--------------------------------	---	---	-------------------------------	--------------------------



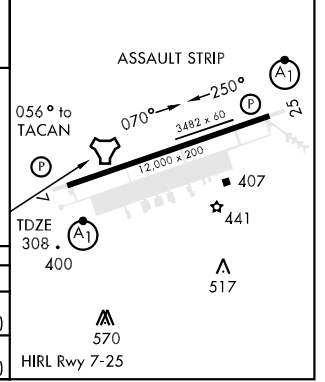
SC-1, 22 OCT 2009 to 19 NOV 2009

SC-1, 22 OCT 2009 to 19 NOV 2009

EMERG SAFE ALT 100 NM 4100



ELEV 311 • 413



CATEGORY	A	B	C	D	E
S-7 *	900/24	592 (600-½)	900/50 592 (600-1)	900/60 592 (600-1¼)	900-1½ 592 (600-1½)
CIRCLING	900-1	589 (600-1)	900-1½ 589 (600-1½)	900-2 589 (600-2)	940-2¼ 629 (700-2¼)