

NDB TYV 290	APCH CRS 250°	Rwy ldg TDZE Arpt Elev 12,000 299 311
-----------------------	-------------------------	---

AL-738 [USAF]

LITTLE ROCK AFB (KLRF)

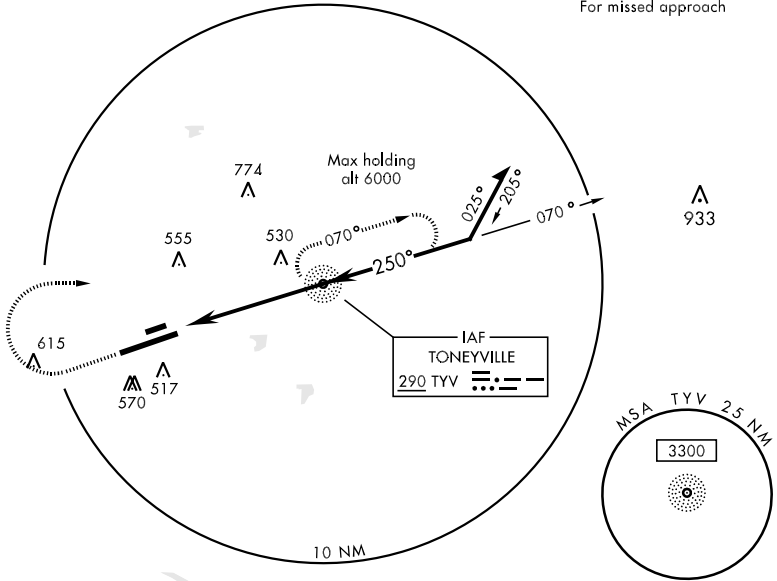
▼ * When ALS inop, increase CAT AB RVR to 60 and vis to 1½ miles, CAT C vis to 1½ miles, CAT D vis to 1¾ miles, CAT E vis to 2 miles.



MISSED APPROACH: Climb to 1300, then climbing right turn to 2000 direct TYV NDB and hold.

ATIS ★ 119.175 251.1	LITTLE ROCK APP CON 119.5 306.2	LITTLE ROCK TOWER 120.6 269.075	GND CON 132.8 275.8	CLNC DEL 253.5
--------------------------------	---	---	-------------------------------	--------------------------

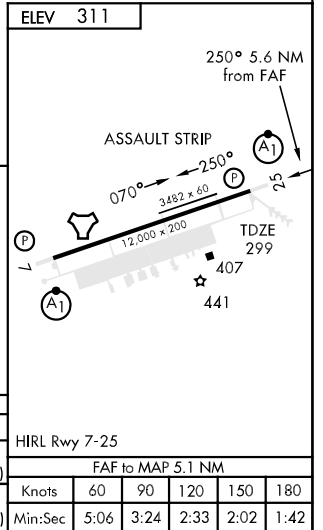
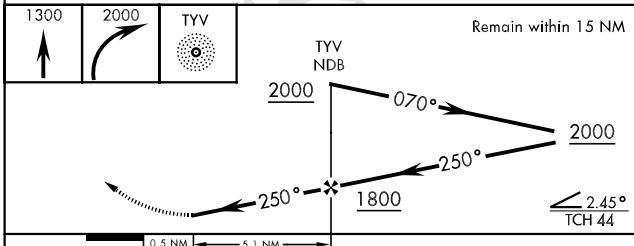
RADAR REQUIRED
For missed approach



SC-1, 22 OCT 2009 to 19 NOV 2009

SC-1, 22 OCT 2009 to 19 NOV 2009

EMERG SAFE ALT 100 NM 4100



CATEGORY	A	B	C	D	E
S-NDB 25 *	880/24 581 (600-½)		880/50 581 (600-1)	880/60 581 (600-1½)	880-1½ 581 (600-1½)
CIRCLING	880-1 569 (600-1)		880-1½ 569 (600-1½)	880-2 569 (600-2)	940-2¼ 629 (700-2¼)

HIRL Rwy 7-25					
FAF to MAP 5.1 NM					
Knots	60	90	120	150	180
Min:Sec	5:06	3:24	2:33	2:02	1:42