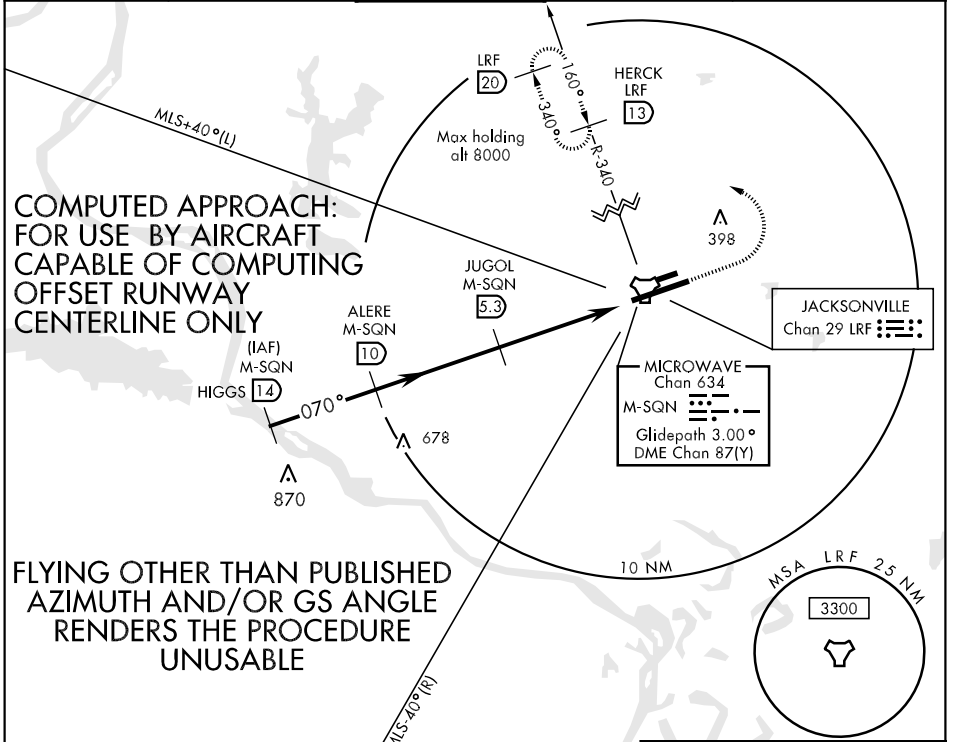


MLS M-SQN Chan 634	APCH CRS 070°	Rwy Idg 12,000 TDZE 308 Arpt Elev 311	AL-738 [USAF]	LITTLE ROCK AFB (KLRF)
------------------------------	-------------------------	--	---------------	------------------------

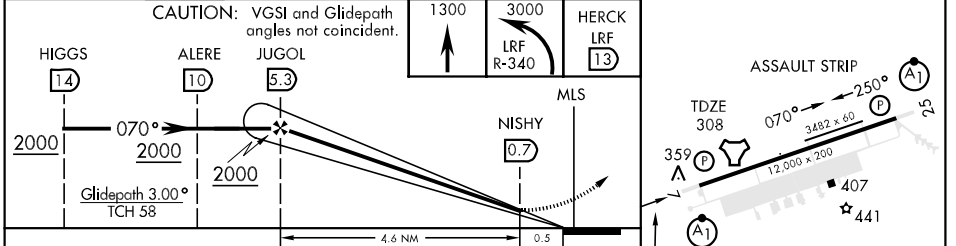
* When ALS inop, increase RVR to 40 and vis to 3/4 mile.
 ** When ALS inop, increase CAT AB RVR to 50 and vis to 1 mile, CAT C vis to 1 1/2 miles, CAT D vis to 1 3/4 miles, CAT E vis to 2 miles.

MISSED APPROACH: Climb to 1300 then turn left climbing to 3000 intercept LRF TACAN R-340 to 13 DME (HERCK) and hold.

ATIS ★ 119.175 251.1	LITTLE ROCK APP CON 119.5 306.2	LITTLE ROCK TOWER 120.6 269.075	GND CON 132.8 275.8	CLNC DEL 253.5
--------------------------------	---	---	-------------------------------	--------------------------



ELEV 311



CATEGORY	A	B	C	D	E
S-MLS 7 *	508/24		200	(200-1/2)	
S-AZ 7 **	860/24		860/50	860/60	860-1 1/2
	552 (600-1/2)		552 (600-1)	552 (600-1 1/4)	552 (600-1 1/2)
CIRCLING	860-1	880-1	880-1 1/2	880-2	940-2 1/4
	549 (600-1)	569 (600-1)	569 (600-1 1/2)	569 (600-2)	629 (700-2 1/4)

HIRL Rwy 7-25

SC-1, 22 OCT 2009 to 19 NOV 2009

SC-1, 22 OCT 2009 to 19 NOV 2009