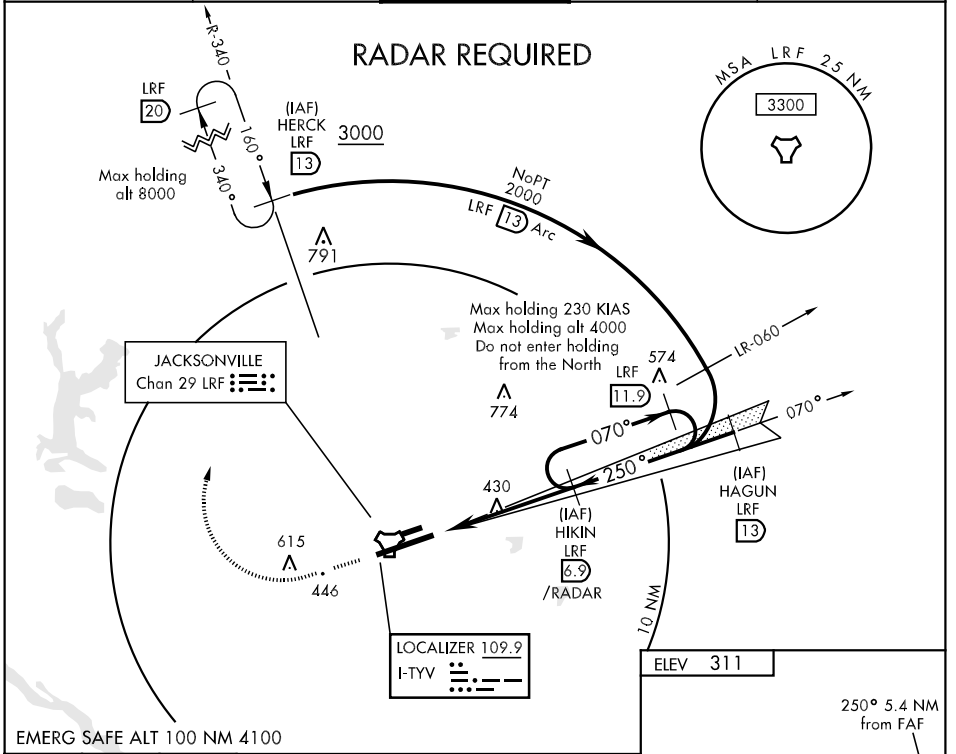


LOC I-TYV 109.9	APCH CRS 250°	Rwy ldg TDZE Arpt Elev 12,000 299 311	AL-738 [USAF]	LITTLE ROCK AFB (KLRF)
* When ALS inop, increase RVR to 40 and vis to 3/4 mile. ** When ALS inop, increase CAT AB RVR to 50 and vis to 1 mile, CAT CD RVR to 60 and vis to 1 1/4 miles, CAT E vis to 1 1/2 miles.			ALSF-1 	MISSED APPROACH: Climb to 1300 then turn right climbing to 3000, intercept LRF TACAN R-340 to 13 DME (HERCK) and hold.
ATIS ★ 119.175 251.1	LITTLE ROCK APP CON 119.5 306.2	LITTLE ROCK TOWER 120.6 269.075	GND CON 132.8 275.8	CLNC DEL 253.5

SC-1, 22 OCT 2009 to 19 NOV 2009

SC-1, 22 OCT 2009 to 19 NOV 2009



1300	3000	HERCK LRF 13	CAUTION: VGSI and Glidepath angles not coincident		R-340 HERCK LRF 13
TACAN	SATEK 2.1	2.9	HIKIN /RADAR LRF 6.9	HAGUN LRF 13	3000
0.6			4.8 NM		Arc 13
GS 2.50° TCH 53			3000		
CATEGORY	A	B	C	D	E
S-ILS 25 *	499/24		200	(200-1/2)	
S-LOC/DME 25 **	700/24	401 (400-1/2)	700/40	401 (400-3/4)	700/50 401 (400-1)
CIRCLING	840-1 529 (600-1)	880-1 569 (600-1)	880-1 1/2 569 (600-1 1/2)	880-2 569 (600-2)	940-2 1/4 629 (700-2 1/4)
HIRL Rwy 7-25					
FAF to MAP 4.8 NM					
Knots	60	90	120	150	180
Min:Sec	4:48	3:12	2:24	1:55	1:36