

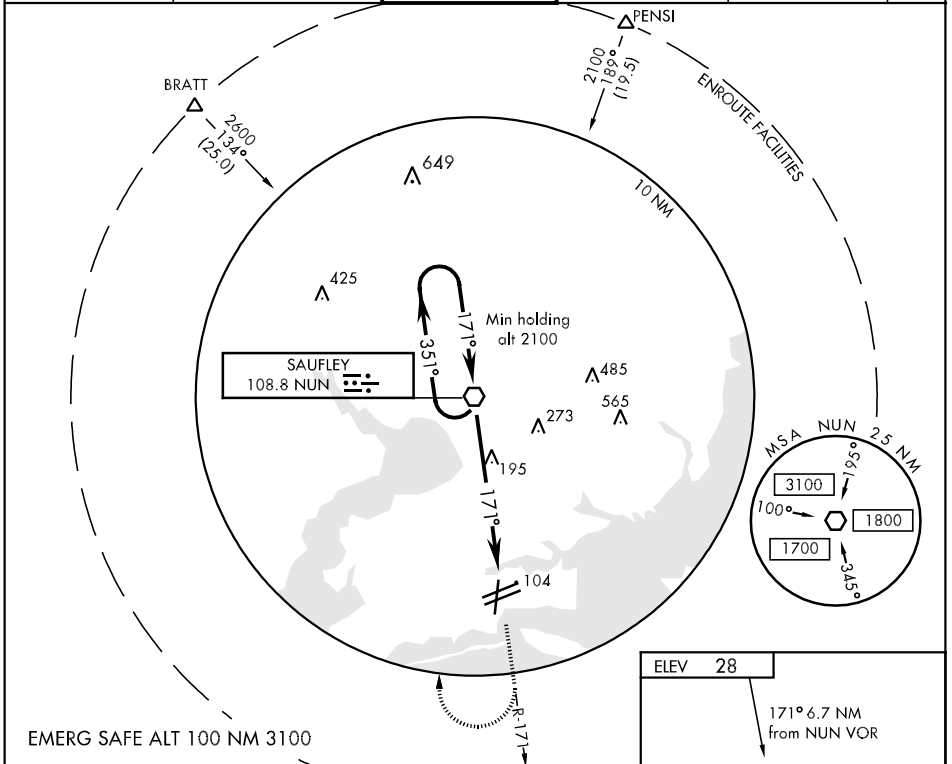
AL-736 [USN]

PENSACOLA NAS (FORREST SHERMAN FLD) (KNPA)

VOR NUN 108.8	APCH CRS 171°	Rwy Idg TDZE Arprt Elev 7137 22 28
-------------------------	-------------------------	--

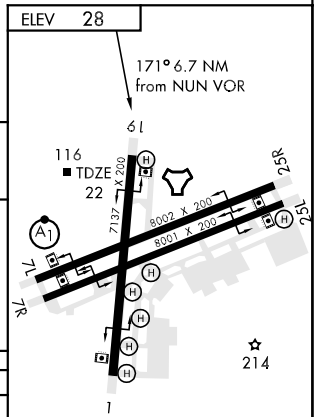
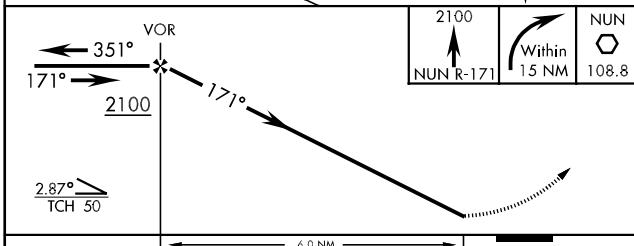
MISSED APPROACH: Climb to 2100 via NUN R-171. Then turn right direct NUN VOR and hold. Remain within 15 NM of NUN VOR.

ATIS 124.35 266.8	PENSACOLA APP CON 120.65 270.8	SHERMAN TOWER 120.7 340.2	GND CON 121.7 336.4	CLNC DEL 134.1 268.7	ASR/ PAR
-----------------------------	--	-------------------------------------	-------------------------------	--------------------------------	-------------



SE-3, 22 OCT 2009 to 19 NOV 2009

SE-3, 22 OCT 2009 to 19 NOV 2009



CATEGORY	A		B		C		D	
S-19	480-1	458 (500-1)	480-1½	458 (500-1¼)	480-1½	458 (500-1½)	458 (500-1½)	
CIRCLING	520-1	492 (500-1)	520-1½	492 (500-1½)	580-2	552 (600-2)		
S-PAR 19	122-½	100 (100-½)	GS 3.00°					

HIRL All Rwys

FAF to MAP 6.0 NM					
Knots	60	90	120	150	180
Min:Sec	6:00	4:00	3:00	2:24	2:00