

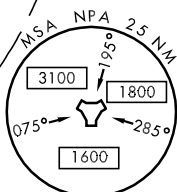
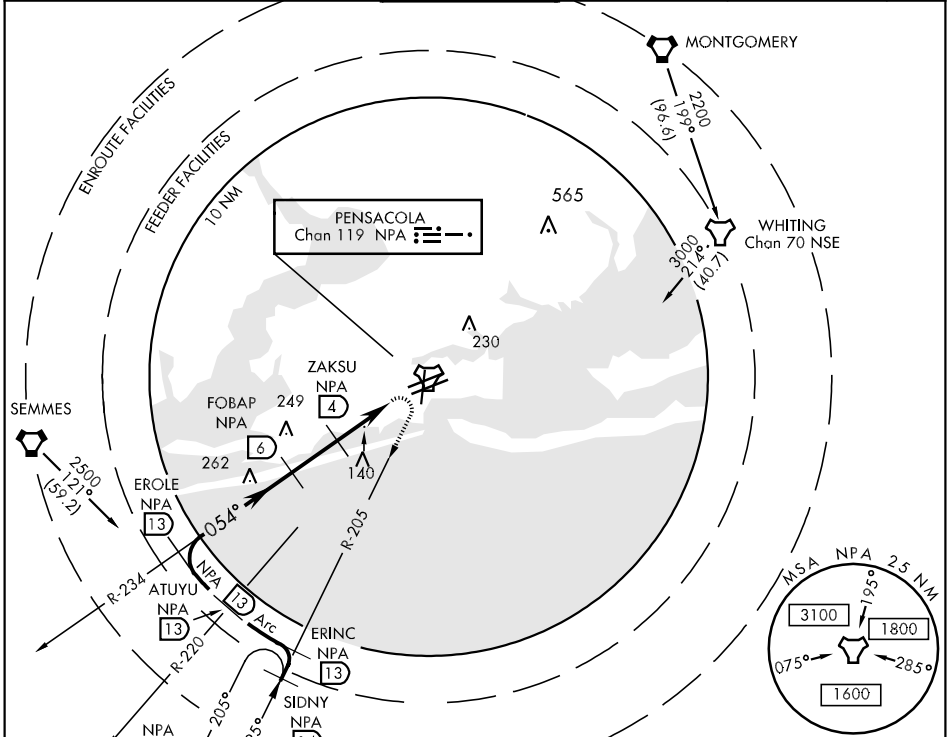
TACAN NPA Chan 119	APCH CRS 054°	Rwy Idg 8001 TDZE 25 Arpt Elev 28
---------------------------	----------------------	--

AL-736 [USN]

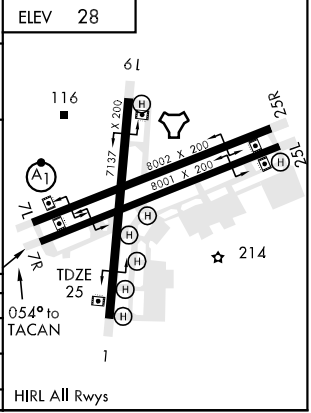
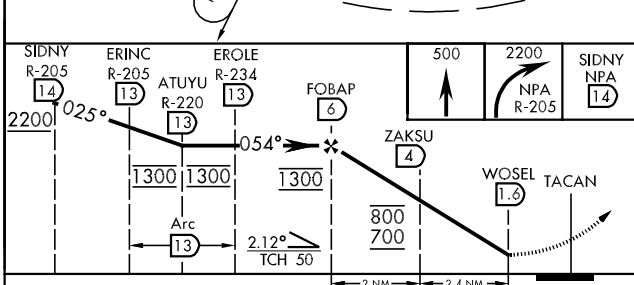
PENSACOLA NAS (FORREST SHERMAN FLD) (KNPA)

MISSED APPROACH: Climb to 500, then climbing right turn to 2200 via NPA TACAN R-205 to SIDNY and hold.

ATIS 124.35 266.8	PENSACOLA APP CON 120.65 270.8	SHERMAN TOWER 120.7 340.2	GND CON 121.7 336.4	CLNC DEL 134.1 268.7	ASR/PAR
-----------------------------	--	-------------------------------------	-------------------------------	--------------------------------	---------



EMERG SAFE ALT 100 NM 3100



CATEGORY	A	B	C	D
S-7R	400-1	375 (400-1)	400-1¼ 375 (400-1¼)	
CIRCLING	520-1 492 (500-1)	520-1½ 492 (500-1½)	580-2 552 (600-2)	
S-PAR 7R	125-½	100 (100-½)	GS 3.00°	

SE-3, 22 OCT 2009 to 19 NOV 2009

SE-3, 22 OCT 2009 to 19 NOV 2009