

TACAN NPA Chan 119	APCH CRS 061°	Rwy Idg TDZE Arpt Elev 8002 23 28
------------------------------	-------------------------	---

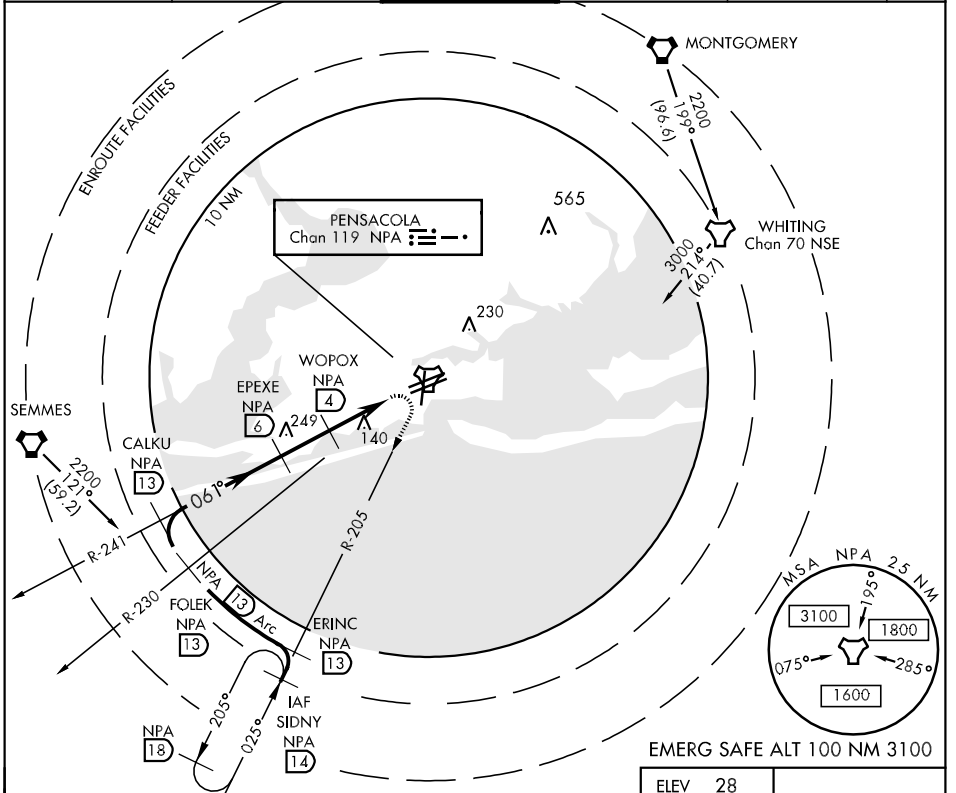
AL-736 [USN]

PENSACOLA NAS (FORREST SHERMAN FLD) (KNPA)

* When ALS inop, increase vis CAT ABC to 1 mile, CAT D vis to 1/4 miles.
 ** When ALS inop, increase vis to 1/2 mile.

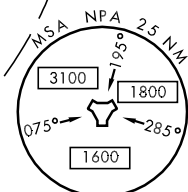
ALSF-1
 MISSED APPROACH: Climb to 500, then climbing right turn to 2200 via NPA TACAN R-205 to SIDNY and hold.

ATIS 124.35 266.8	PENSACOLA APP CON 120.65 270.8	SHERMAN TOWER 120.7 340.2	GND CON 121.7 336.4	CLNC DEL 134.1 268.7	ASR/PAR
-----------------------------	--	-------------------------------------	-------------------------------	--------------------------------	---------

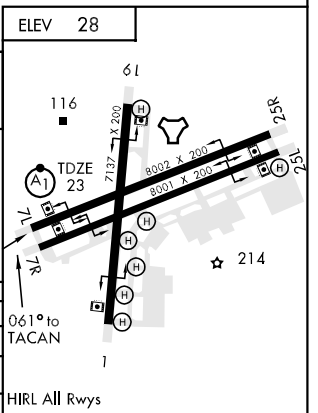
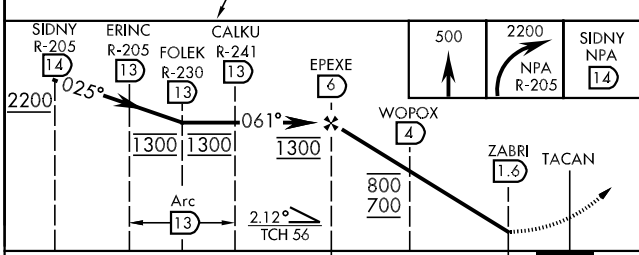


SE-3, 22 OCT 2009 to 19 NOV 2009

SE-3, 22 OCT 2009 to 19 NOV 2009



EMERG SAFE ALT 100 NM 3100



CATEGORY	A	B	C	D
S-7L *	400-1/2 377 (400-1/2)	400-3/4 377 (400-3/4)		
CIRCLING	520-1 492 (500-1)	520-1 1/2 492 (500-1 1/2)	580-2 552 (600-2)	
S-PAR 7L **	123-1/4	100 (100-1/4)	GS 3.00°	