

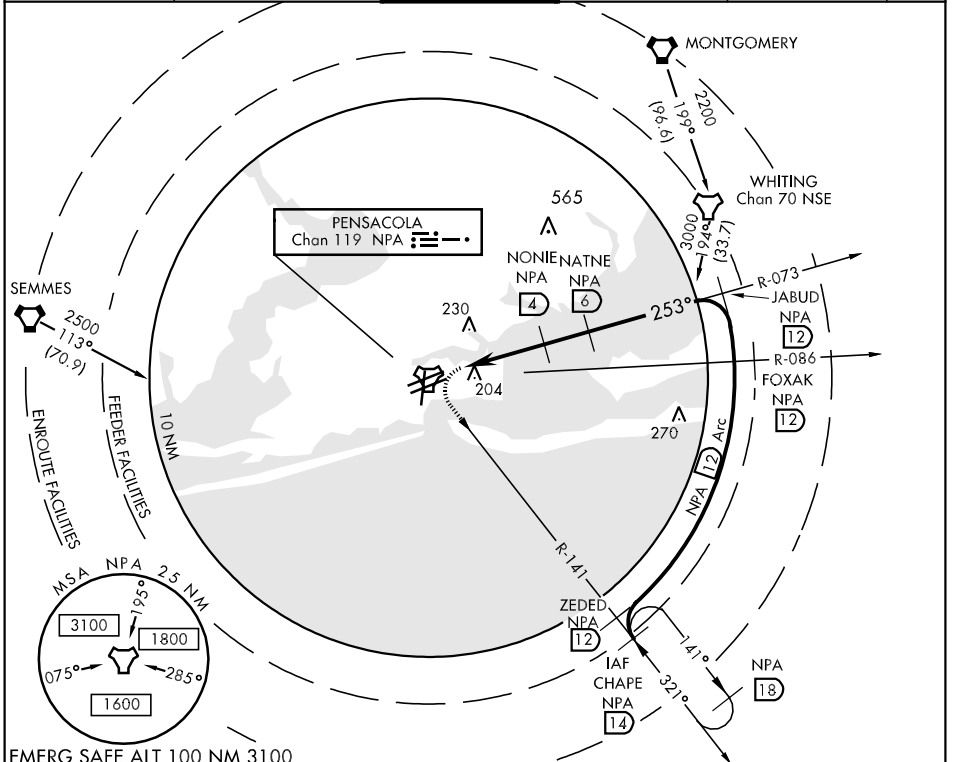
TACAN NPA Chan 119	APCH CRS 253°	Rwy Idg TDZE Arpt Elev	8002 21 28
------------------------------	-------------------------	------------------------------	---------------------------------------

AL-736 [USN]

PENSACOLA NAS (FORREST SHERMAN FLD) (KNPA)

MISSED APPROACH: Climbing left turn to 2200 via NPA TACAN R-141 to CHAPE and hold.

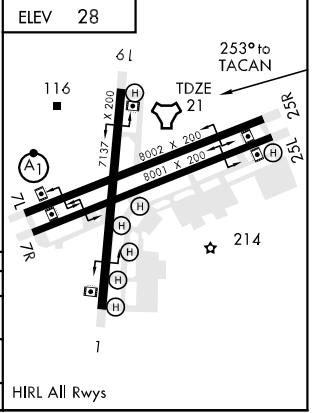
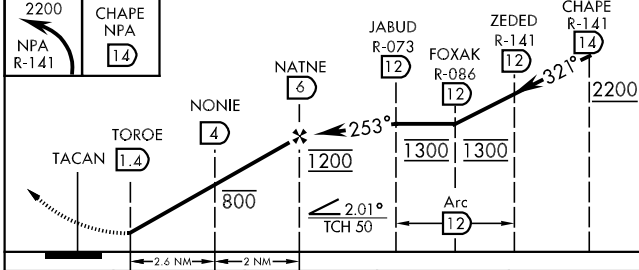
ATIS 124.35 266.8	PENSACOLA APP CON 120.65 270.8	SHERMAN TOWER 120.7 340.2	GND CON 121.7 336.4	CLNC DEL 134.1 268.7	ASR/ PAR
-----------------------------	--	-------------------------------------	-------------------------------	--------------------------------	-------------



SE-3, 22 OCT 2009 to 19 NOV 2009

SE-3, 22 OCT 2009 to 19 NOV 2009

EMERG SAFE ALT 100 NM 3100



CATEGORY	A		B	C	D
S-25R	460-1	439	(500-1)	460-1¼ 439 (500-1¼)	460-1½ 439 (500-1½)
CIRCLING	520-1	492	(500-1)	520-1½ 492 (500-1½)	580-2 552 (600-2)
S-PAR 25R	121-½		100	(100-½)	GS 3.00°