

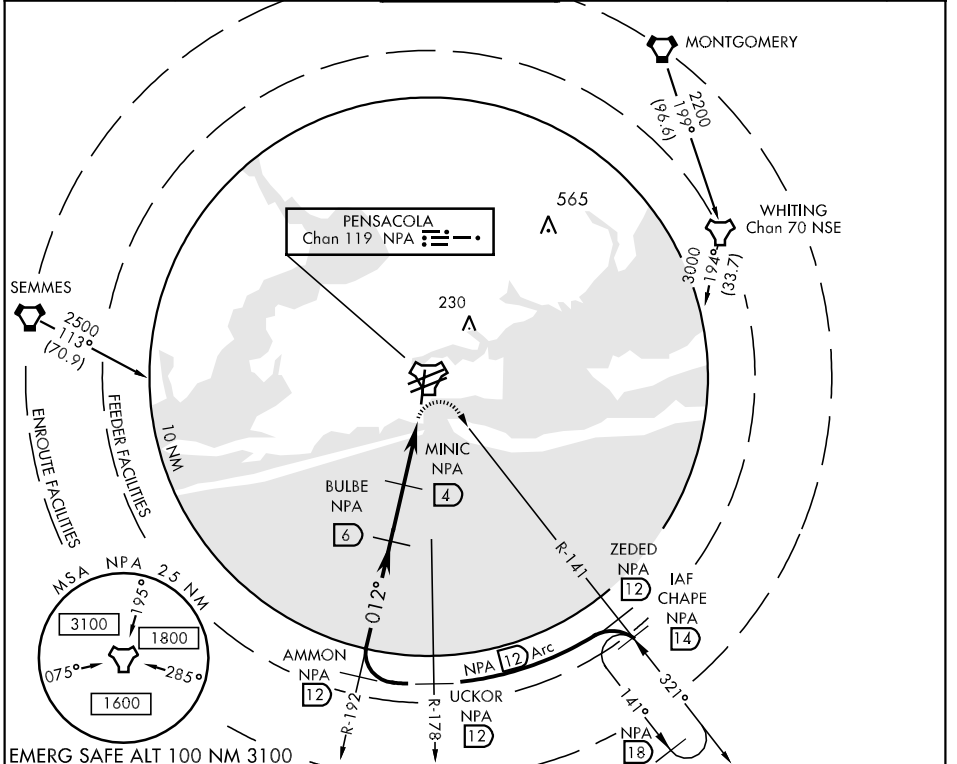
TACAN NPA Chan <b>119</b>	APCH CRS <b>012°</b>	Rwy Idg TDZE Arpt Elev <b>7137</b> <b>28</b> <b>28</b>
------------------------------	-------------------------	---

AL-736 [USN]

PENSACOLA NAS (FORREST SHERMAN FLD) (KNPA)

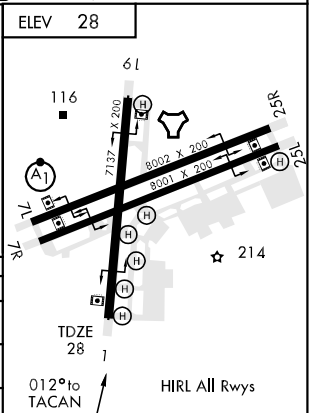
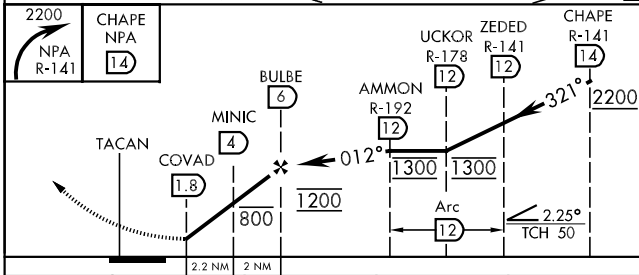
MISSED APPROACH: Climbing right turn to 2200 via NPA TACAN R-141 to CHAPE and hold.

ATIS <b>124.35 266.8</b>	PENSACOLA APP CON <b>120.65 270.8</b>	SHERMAN TOWER <b>120.7 340.2</b>	GND CON <b>121.7 336.4</b>	CLNC DEL <b>134.1 268.7</b>	ASR/ PAR
-----------------------------	--	-------------------------------------	-------------------------------	--------------------------------	-------------



SE-3, 22 OCT 2009 to 19 NOV 2009

SE-3, 22 OCT 2009 to 19 NOV 2009



CATEGORY	A		B	C	D
S-1	460-1	432	(500-1)	460-1¼ 432 (500-1¼)	460-1½ 432 (500-1½)
CIRCLING	520-1	492	(500-1)	520-1½ 492 (500-1½)	580-2 552 (600-2)
S-PAR 1	128-½		100	(100-½)	GS 3.00°