

LOC I-NPA 109.3	APCH CRS 069°	Rwy Idg 8002 TDZE 23 Arprt Elev 28
---------------------------	-------------------------	---

AL-736 [USN]

PENSACOLA NAS (FORREST SHERMAN FLD) (KNPA)

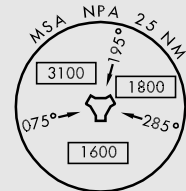
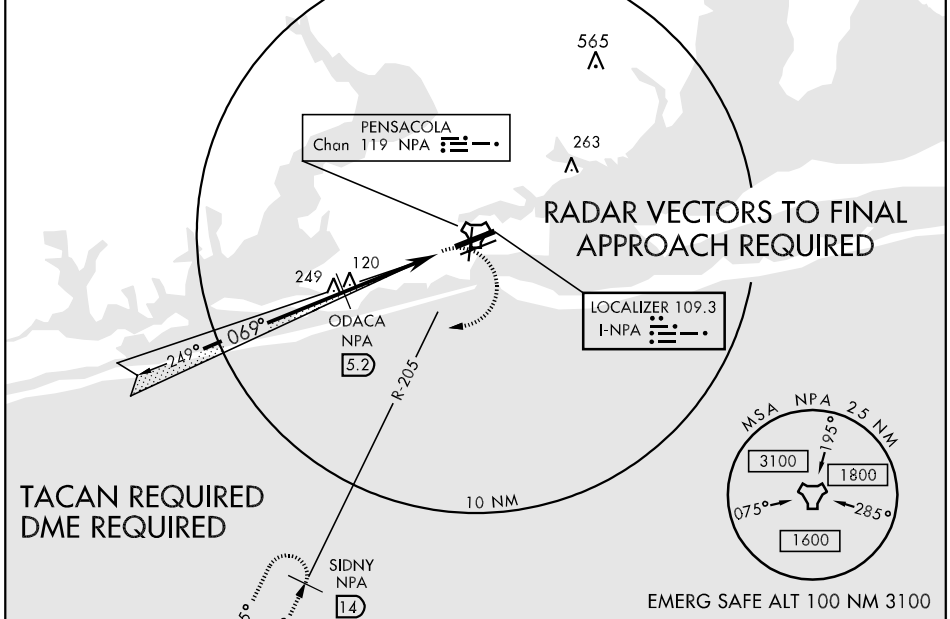
* When ALS inop, increase vis to ¼ mile.
 ** When ALS inop, increase vis CAT ABC to 1 mile, CAT DE vis to 1¼ miles.



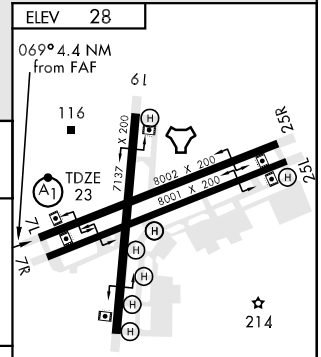
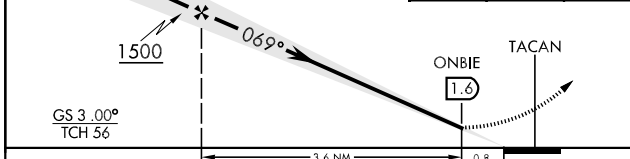
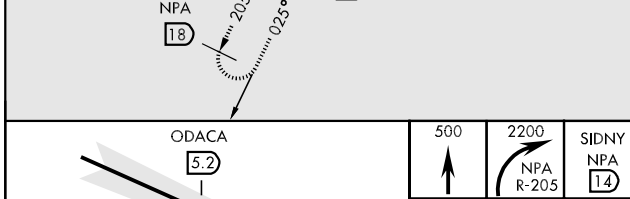
MISSED APPROACH: Climb to 500. Then climbing right turn to 2200 via NPA R-205 to SIDNY and hold.

ATIS 124.35 266.8	PENSACOLA APP CON 120.65 270.8	SHERMAN TOWER 120.7 340.2	GND CON 121.7 336.4	CLNC DEL 134.1 268.7	ASR/ PAR
-----------------------------	--	-------------------------------------	-------------------------------	--------------------------------	-------------

*** When ALS inop, increase vis to ½ mile.



EMERG SAFE ALT 100 NM 3100



CATEGORY	A	B	C	D	E
S-ILS 7L *	223- ½		200	(200-½)	
S-LOC/DME 7L **	380- ½	357 (400-½)	380- ¾ 357 (400-¾)		
CIRCLING	520-1	492 (500-1)	520-1 ½	580-2	552 (600-2)
S-PAR 7L ***	123- ¼		100 (100-½)	GS 3.00°	

FAF to MAP 3.6 NM					
Knots	60	90	120	150	180
Min:Sec	3:36	2:24	1:48	1:26	1:12

SE-3, 22 OCT 2009 to 19 NOV 2009

SE-3, 22 OCT 2009 to 19 NOV 2009