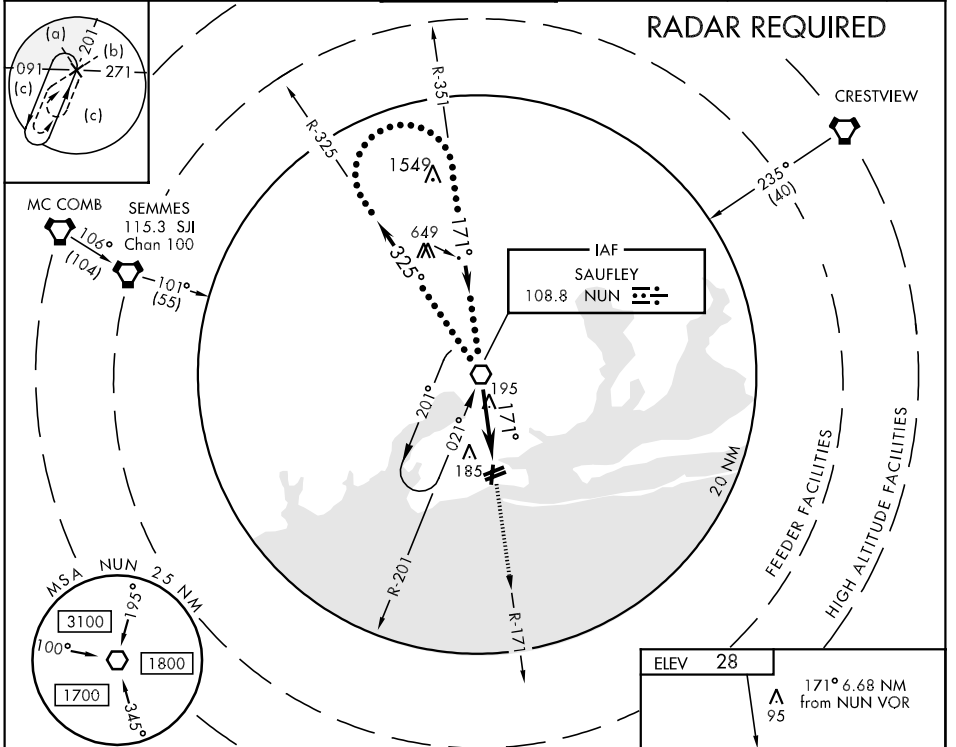


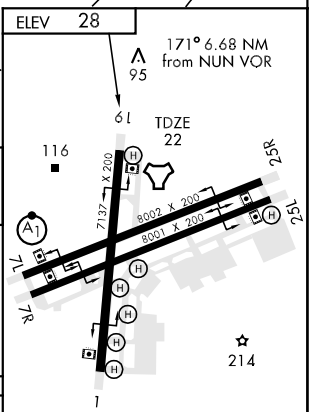
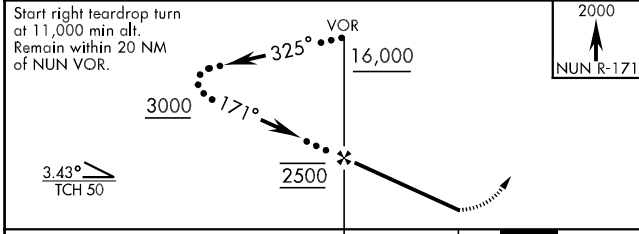
VOR NUN <b>108.8</b>	APCH CRS <b>171°</b>	Rwy Idg 7137 TDZE 22 Arpt Elev 28	JAL-736 [USN] (FORREST SHERMAN FLD) PENSACOLA NAS (KNPA)
-------------------------	-------------------------	--	--

Procedure not available when Pensacola South Military Operating Area (MOA) is active. MISSED APPROACH: Climb to 2000 via NUN R-171.

ATIS <b>124.35 266.8</b>	PENSACOLA APP CON <b>120.65 270.8</b>	SHERMAN TOWER <b>120.7 340.2</b>	GND CON <b>121.7 336.4</b>	CLNC DEL <b>134.1 268.7</b>	ASR/ PAR
-----------------------------	--	-------------------------------------	-------------------------------	--------------------------------	-------------



EMERG SAFE ALT 100 NM 3100



CATEGORY	C	D	E
S-19	480-1¼ 458 (500-1¼)	480-1½ 458 (500-1½)	
CIRCLING	520-1½ 492 (500-1½)	580-2 552 (600-2)	
S-PAR 19	122-½	100 (100-½)	GS 3.0°

HIRL All Rwy

FAF to MAP 6.0 NM					
Knots	120	140	160	180	200
Min:Sec	3:00	2:34	2:15	2:00	1:48

SE-3, 22 OCT 2009 to 19 NOV 2009

SE-3, 22 OCT 2009 to 19 NOV 2009