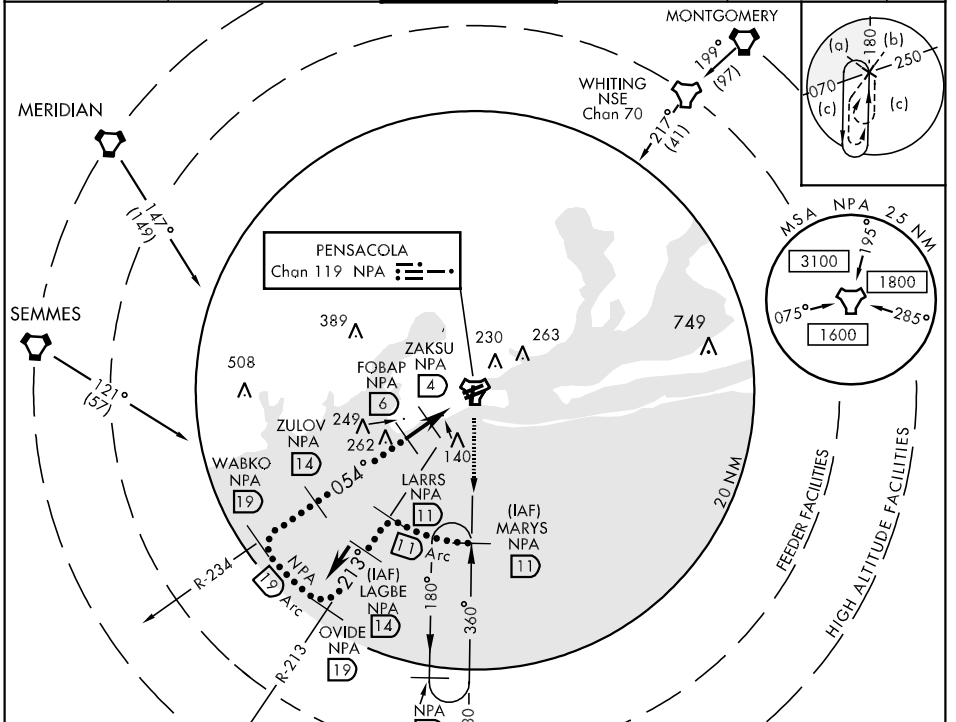


TACAN NPA Chan <b>119</b>	APCH CRS <b>054°</b>	Rwy Idg <b>8001</b> TDZE <b>25</b> Arpt Elev <b>28</b>	JAL-736 [USN] (FORREST SHERMAN FLD) PENSACOLA NAS (KNPA)
---------------------------	----------------------	--	--

MISSED APPROACH: Climb to 500, then climbing right turn to 2000 via NPA TACAN R-180 to MARYS and hold.

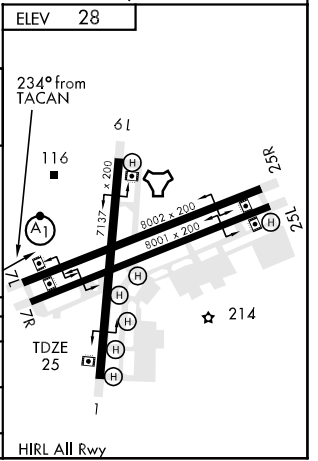
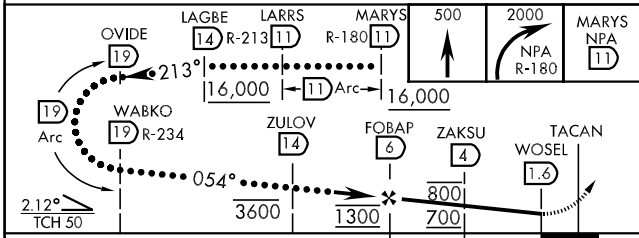
ATIS <b>124.35 266.8</b>	PENSACOLA APP CON <b>120.65 270.8</b>	SHERMAN TOWER <b>120.7 340.2</b>	GND CON <b>121.7 336.4</b>	CLNC DEL <b>134.1 268.7</b>	ASR/ PAR
-----------------------------	--	-------------------------------------	-------------------------------	--------------------------------	-------------



SE-3, 22 OCT 2009 to 19 NOV 2009

SE-3, 22 OCT 2009 to 19 NOV 2009

EMERG SAFE ALT 100 NM 3100



CATEGORY	C	D	E
S-7R	400-1 375 (400-1)	400-1¼	375 (400-1¼)
CIRCLING	520-1½ 492 (500-1½)	580-2	552 (600-2)
S-PAR 7R	125-½	100 (100-½)	GS 3.0°