


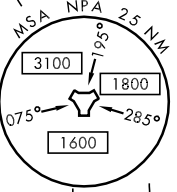
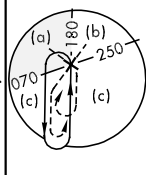
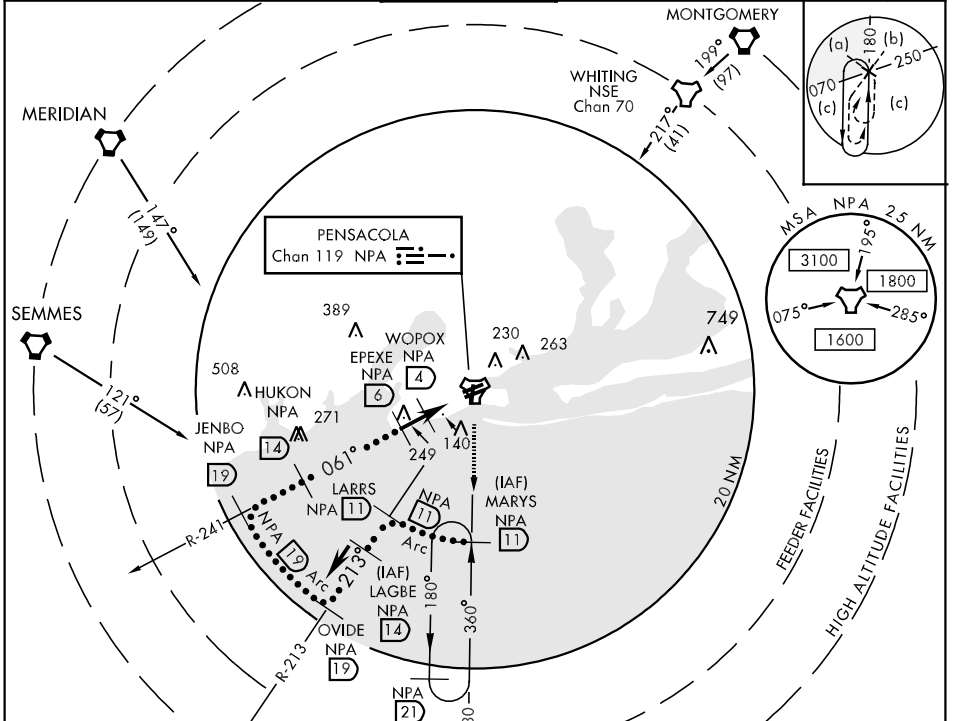
TACAN NPA Chan 119	APCH CRS 061°	Rwy Idg TDZE Arpt Elev 8002 23 28	JAL-736 [USN] (FORREST SHERMAN FLD) PENSACOLA NAS (KNPA)
------------------------------	-------------------------	---	--

* When ALS inop, increase CAT C vis to 1 mile, CAT DE vis to 1 1/4 miles.
 ** When ALS inop, increase vis to 1/2 mile.

ALS-1 

MISSED APPROACH: Climb to 500, then climbing right turn to 2000 via NPA TACAN R-180 to MARYS and hold.

ATIS 124.35 266.8	PENSACOLA APP CON 120.65 270.8	SHERMAN TOWER 120.7 340.2	GND CON 121.7 336.4	CLNC DEL 134.1 268.7	ASR/ PAR
-----------------------------	--	-------------------------------------	-------------------------------	--------------------------------	-------------

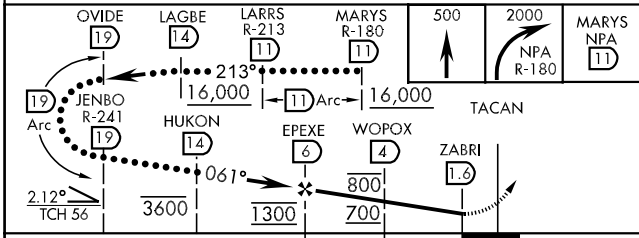


SE-3, 22 OCT 2009 to 19 NOV 2009

SE-3, 22 OCT 2009 to 19 NOV 2009

EMERG SAFE ALT 100 NM 3100

ELEV 28



CATEGORY	C	D	E
S-7L *	400-3/4	377	(400-3/4)
CIRCLING	520-1 1/2 492 (500-1 1/2)	580-2	552 (600-2)
S-PAR 7L **	123-1/4	100 (100-1/4)	GS 3.0°

HIRL All Rwy