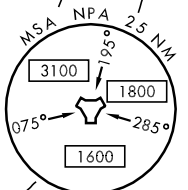
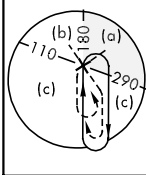
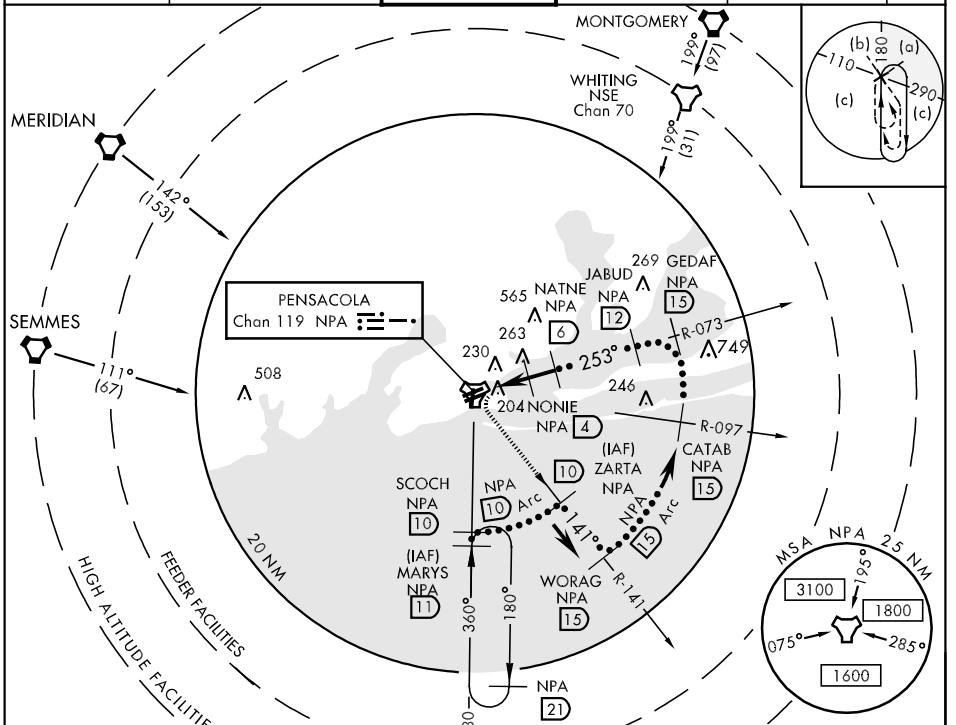


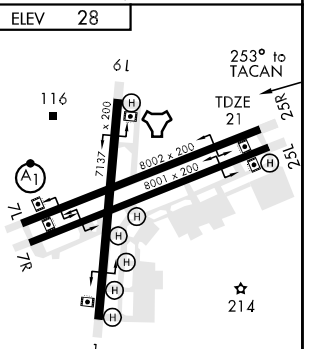
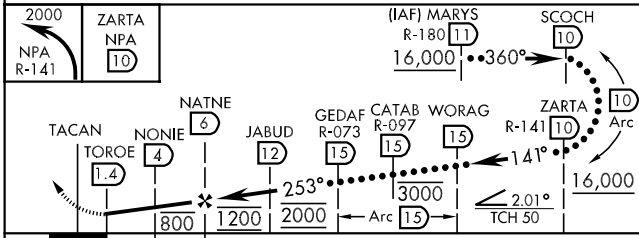
TACAN NPA Chan <b>119</b>	APCH CRS <b>253°</b>	Rwy Idg TDZE Arpt Elev <b>8002</b> <b>21</b> <b>28</b>	JAL-736 [USN] (FORREST SHERMAN FLD) PENSACOLA NAS (KNPA)
------------------------------	-------------------------	---	--

MISSED APPROACH: Climbing left turn to 2000 via NPA TACAN R-141 to ZARTA.

ATIS <b>124.35 266.8</b>	PENSACOLA APP CON <b>120.65 270.8</b>	SHERMAN TOWER <b>120.7 340.2</b>	GND CON <b>121.7 336.4</b>	CLNC DEL <b>134.1 268.7</b>	ASR/ PAR
-----------------------------	--	-------------------------------------	-------------------------------	--------------------------------	-------------



EMERG SAFE ALT 100 NM 3100



CATEGORY	C	D	E
S-25R	460-1¼ 439 (500-1¼)	460-1½ 439	(500-1½)
CIRCLING	520-1½ 492 (500-1½)	580-2	552 (600-2)
S-PAR 25R	121-½	100 (100-½)	GS 3.0°

HIRL All Rwy

SE-3, 22 OCT 2009 to 19 NOV 2009

SE-3, 22 OCT 2009 to 19 NOV 2009