

NEWPORT, OREGON

AL-735 (FAA)

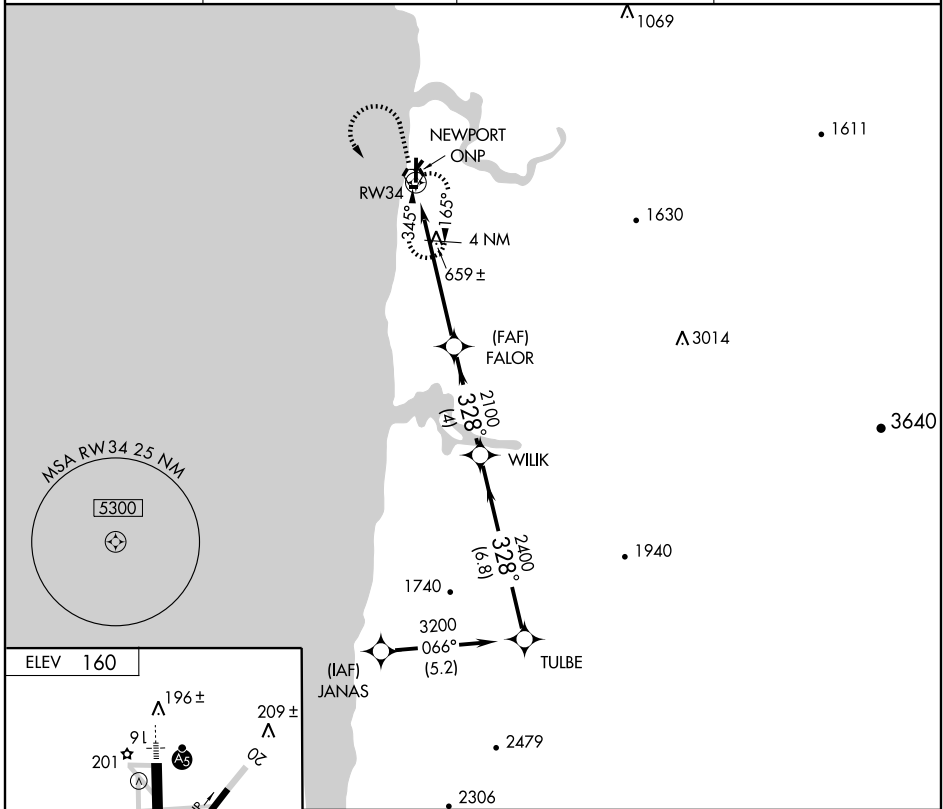
RNAV (GPS) RWY 34

NEWPORT MUNI (ONP)

APP CRS	Rwy Idg	5098
328°	TDZE	155
	Apt Elev	160

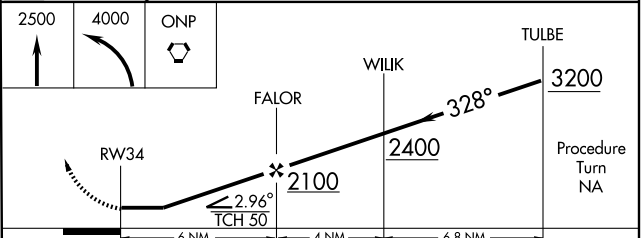
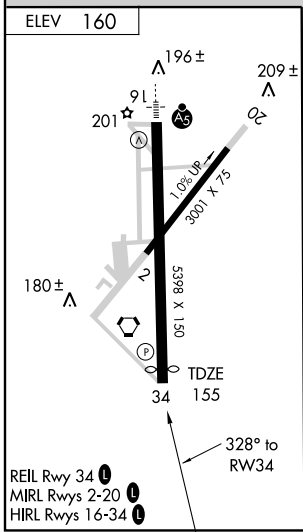
NA GPS or RNP-0.3 required. DME/DME RNP-0.3 NA. MISSED APPROACH: Climb to 2500, then climbing left turn to 4000 direct ONP VORTAC and hold.

AWOS-3 133.9	SEATTLE CENTER 125.8 291.7	MCMINNVILLE RADIO 122.5	UNICOM 122.8 (CTAF) 0
------------------------	--------------------------------------	-----------------------------------	--



NW-1, 22 OCT 2009 to 19 NOV 2009

NW-1, 22 OCT 2009 to 19 NOV 2009



CATEGORY	A	B	C	D
LNAV MDA	920-1 765 (800-1)	920-1¼ 765 (800-1¼)	920-2¼ 765 (800-2¼)	920-2½ 765 (800-2½)
CIRCLING	920-1 760 (800-1)	920-1¼ 760 (800-1¼)	920-2¼ 760 (800-2¼)	960-2½ 800 (800-2½)

NEWPORT, OREGON
Orig 09295

44°35'N-124°03'W

NEWPORT MUNI (ONP) RNAV (GPS) RWY 34