

NEWPORT, OREGON

AL-735 (FAA)

# RNAV (GPS) RWY 16

NEWPORT MUNI (ONP)

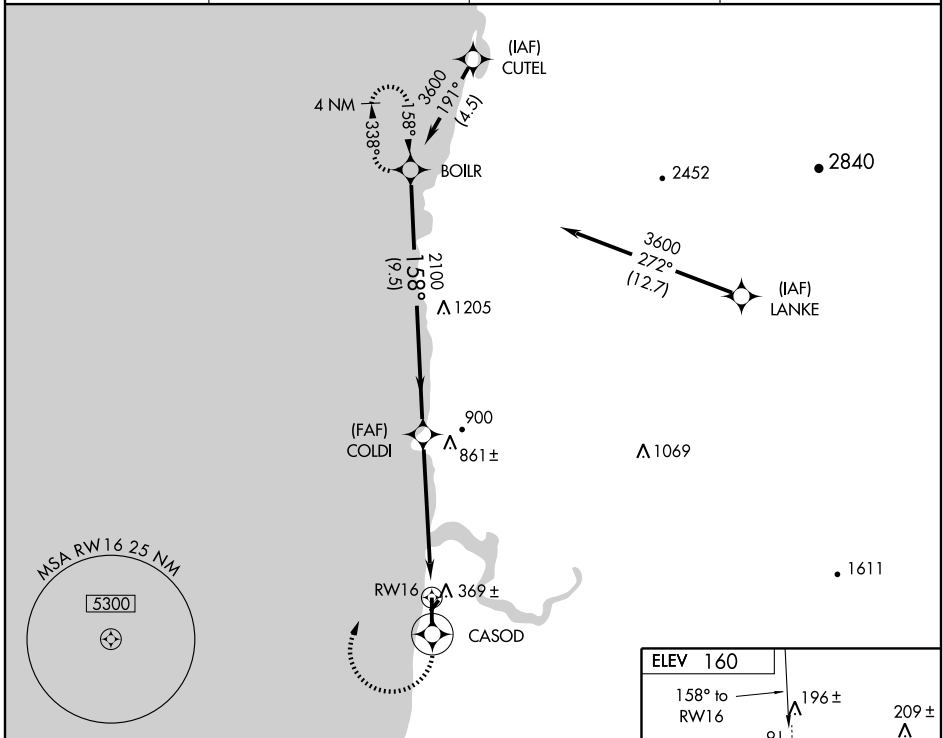
APP CRS <b>158°</b>	Rwy Idg <b>5398</b>
	TDZE <b>151</b>
	Apt Elev <b>160</b>

**NA** Inoperative table does not apply to LNAV/VNAV, GPS or RNP-0.3 required. DME/DME RNP-0.3 NA. Baro-VNAV NA below -15°C (5°F).

**MALSR**

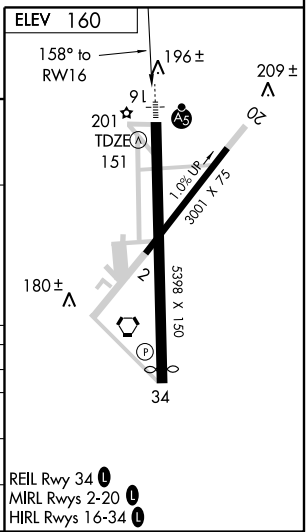
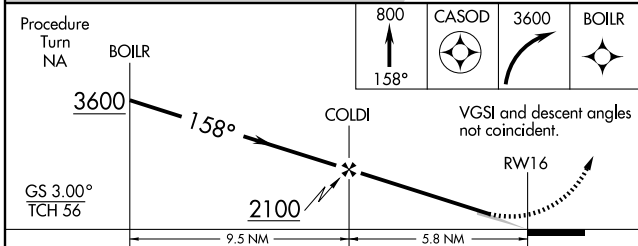
**MISSED APPROACH:** Climb to 800 via 158° course to CASOD WP then climbing right to 3600 direct BOILR WP and hold.

AWOS-3 <b>133.9</b>	SEATTLE CENTER <b>125.8 291.7</b>	MCMINNVILLE RADIO <b>122.5</b>	UNICOM <b>122.8 (CTAF)</b>
------------------------	--------------------------------------	-----------------------------------	-------------------------------



NW-1, 22 OCT 2009 to 19 NOV 2009

NW-1, 22 OCT 2009 to 19 NOV 2009



Procedure Turn NA	BOILR	CASOD	3600	BOILR
GS 3.00° TCH 56		COLDI		RWY16
	9.5 NM	5.8 NM		
CATEGORY	A	B	C	D
GLS PA DA	NA			
LNAV/VNAV DA	620-1½	469 (500-1½)		
LNAV MDA	720-¾ 569 (600-¾)	720-1½ 569 (600-1½)	720-1¾ 569 (600-1¾)	
CIRCLING	880-1½ 720 (800-1½)	880-2 720 (800-2)	960-2½ 800 (800-2½)	

NEWPORT, OREGON  
Orig 09295

44°35'N-124°03'W

NEWPORT MUNI (ONP)  
**RNAV (GPS) RWY 16**

REIL Rwy 34

MIRL Rwy 2-20

HIRL Rwy 16-34