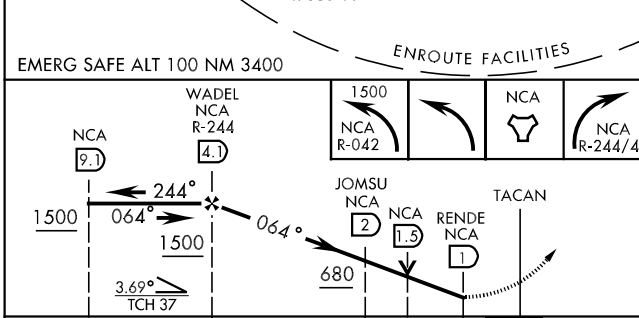
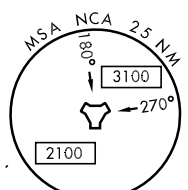
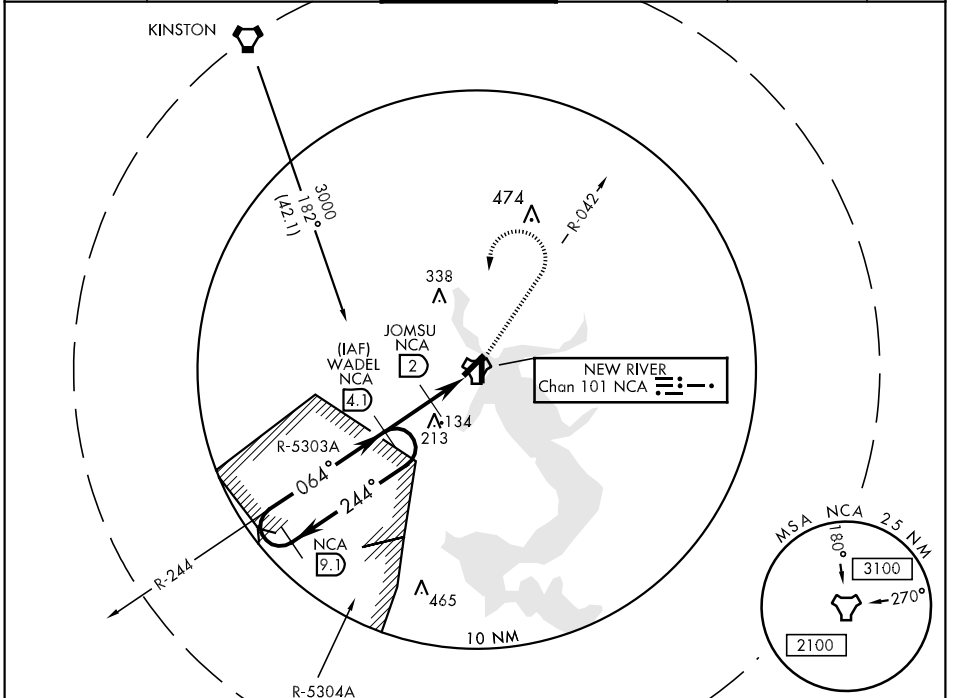
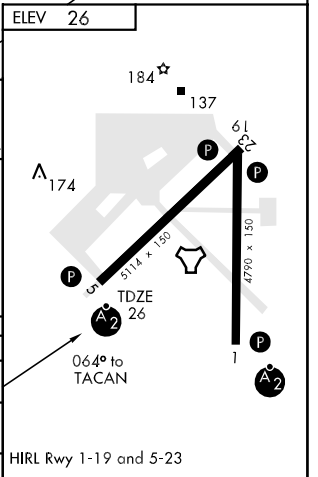


TACAN NCA Chan 101	APCH CRS 064°	Rwy Idg 5114 TDZE 26 Arpt Elev 26	AL-732 [USN] NEW RIVER MCAS (MC CUTCHEON FLD)(KNCA)
* When ALS inop, increase vis CAT ABC to 1 mile, CAT D to 1¼ mile.		SALSF	MISSED APPROACH: Climbing left turn to 1500 via NCA R-042. Then left turn direct NCA TACAN, then via NCA R-244 direct WADEL and hold.
** When ALS inop, increase vis CAT ABCD to ½ mile.			

ATIS ★ 288.325	CHERRY POINT APP CON 119.35 377.175	NEW RIVER TOWER★ 120.00★ 360.2	GND CON 121.8 254.275	CLNC DEL 239.025	ASR/PAR
-------------------	--	-----------------------------------	--------------------------	---------------------	---------



CATEGORY	A	B	C	D
S-5*	400-¾	374	(400-¾)	400-1 374 (400-1)
CIRCLING	500-1	474 (500-1)	500-1½ 474 (500-1½)	580-2 554 (600-2)
S-PAR 5**	126-¼	100	(100-¼)	GS 3.00°



SE-2, 22 OCT 2009 to 19 NOV 2009

SE-2, 22 OCT 2009 to 19 NOV 2009