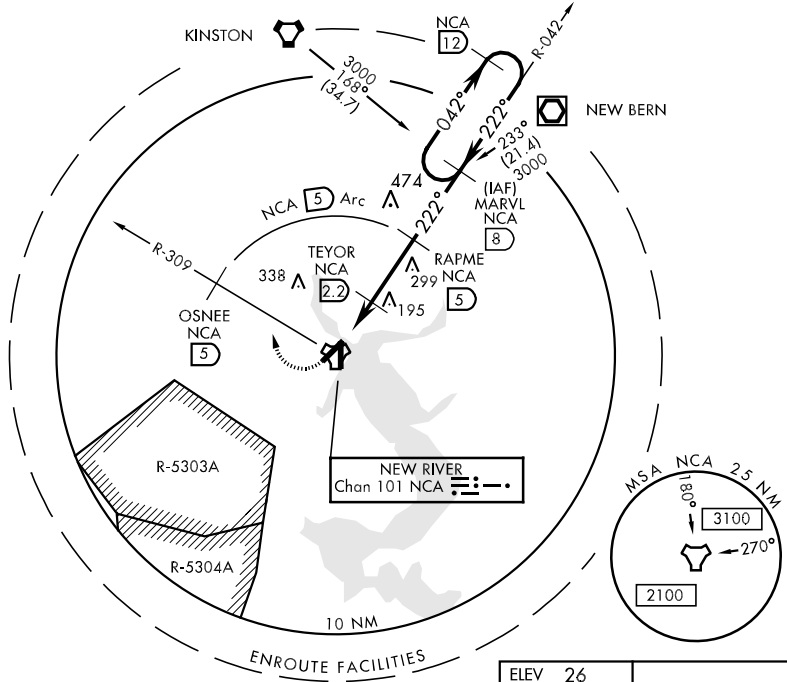


TACAN NCA Chan 101	APCH CRS 222°	Rwy Idg 5114 TDZE 25 Arpt Elev 26	AL-732 [USN] NEW RIVER MCAS (MC CUTCHEON FLD)(KNCA)
-----------------------	------------------	--	---

MISSED APPROACH: Climbing right turn to 1500 via NCA R-309 to OSNEE. Arc N via NCA TACAN 5 DME Arc to RAPME, then via R-042 direct MARVL (R-042/8 DME) and hold.

ATIS ★ 288.325	CHERRY POINT APP CON 119.35 377.175	NEW RIVER TOWER★ 120.00★ 360.2	GND CON 121.8 254.275	CLNC DEL 239.025	ASR/PAR
-------------------	--	-----------------------------------	--------------------------	---------------------	---------

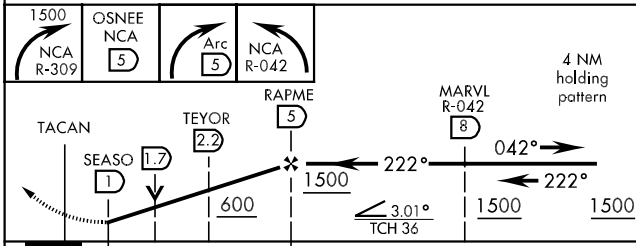
CAUTION: Intmed segment length 3 NM.



SE-2, 22 OCT 2009 to 19 NOV 2009

SE-2, 22 OCT 2009 to 19 NOV 2009

EMERG SAFE ALT 100 NM 3400



CATEGORY	A	B	C	D
S-23	440-1 415 (500-1)	440-1¼ 415 (500-1¼)		
CIRCLING	500-1 474 (500-1)	500-1½ 474 (500-1½)	580-2 554 (600-2)	
S-PAR 23	125-½	100	(100-½)	G5 3.00°

