

APCH CRS 008°	Rwy Idg 4790
	TDZE 24
	Arpt Elev 26

AL-732 [USN] NEW RIVER MCAS (MC CUTCHEON FLD)(KNCA)

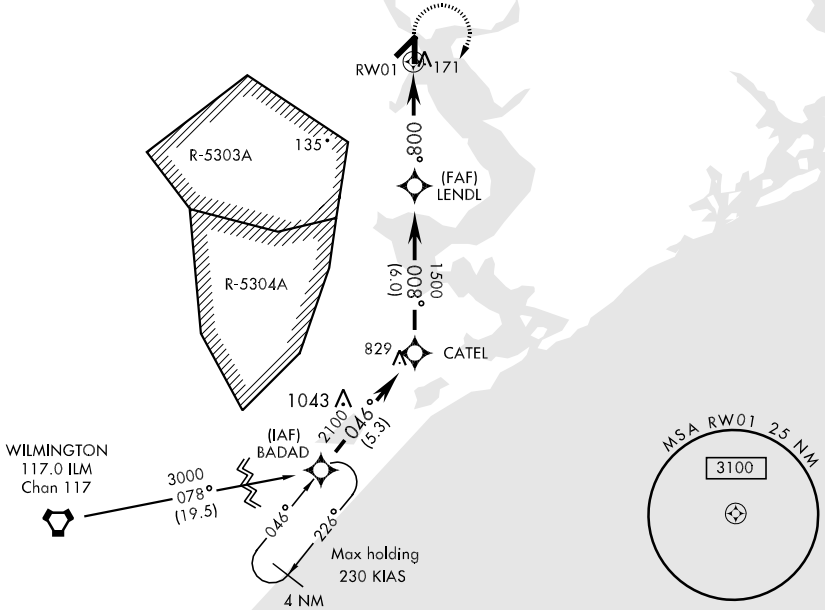
* When ALS inop, increase vis CAT ABCD to 1 mile.
 ** When ALS inop, increase vis CAT AB to 1 mile, CAT CD to 1¼ miles.
 *** When ALS inop, increase vis CAT ABCD to ½ mile.



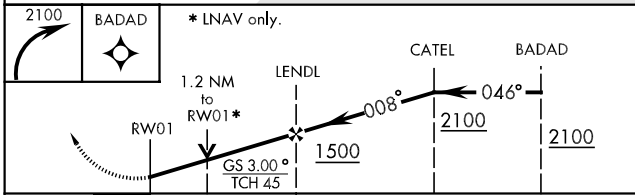
MISSED APPROACH: Climbing right turn to 2100 direct BADAD and hold.

ATIS ★ 288.325	CHERRY POINT APP CON 119.35 377.175	NEW RIVER TOWER★ 120.00★ 360.2	GND CON 121.8 254.275	CLNC DEL 239.025	ASR/PAR
--------------------------	---	--	---------------------------------	----------------------------	---------

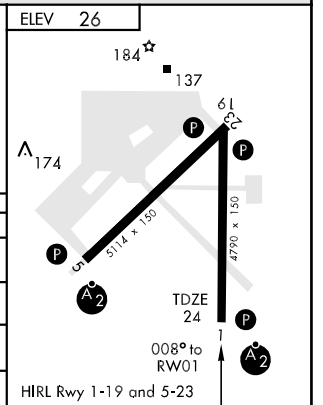
Baro VNAV NA below -15°C(5°F)
 and above 42°C(108°F).
 DME/DME RNP-0.3 NA.



EMERG SAFE ALT 100 NM 3400



CATEGORY	A	B	C	D
LNAV/VNAV DA *	340-¾		316 (400-¾)	
LNAV MDA **	440-¾	416 (500-¾)	440-1	416 (500-1)
CIRCLING	500-1	474 (500-1)	500-1½ 474 (500-1½)	580-2 554 (600-2)
S-PAR 1 ***	124-¼		100 (100-¼)	GS 3.0°



SE-2, 22 OCT 2009 to 19 NOV 2009

SE-2, 22 OCT 2009 to 19 NOV 2009