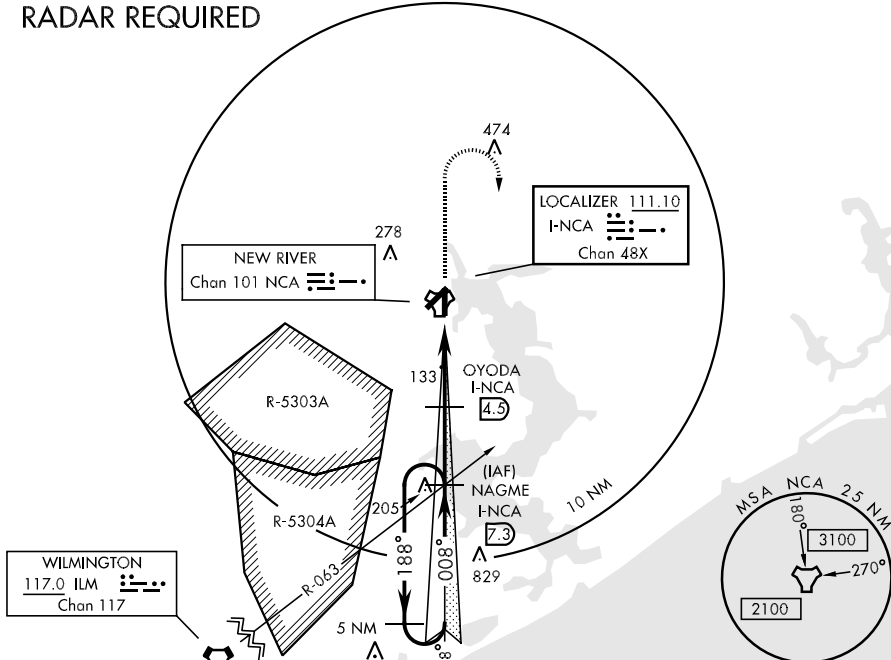


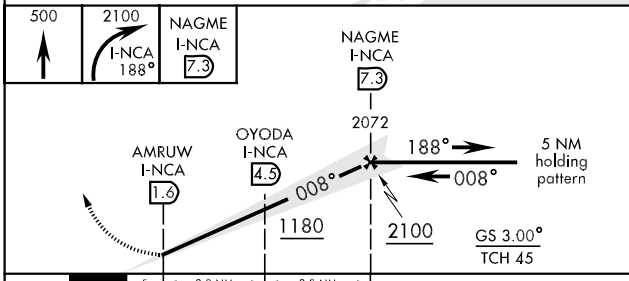
LOC I-NCA 111.10	APCH CRS 008°	Rwy Idg TDZE Arpt Elev 4790 24 26	AL-732 [USN]	NEW RIVER MCAS (MC CUTCHEON FLD) (KNCA)
*When ALS inop, increase CAT AB vis to 3/4 mile. **When ALS inop, increase CAT ABC vis to 1 mile, CAT D vis to 1 1/4 miles. ***When ALS inop, increase vis to 1/2 mile.			SALSF 	MISSED APPROACH: Climb to 500, then climbing right turn to 2100 via I-NCA south crs to NAGME and hold.

ATIS ★ 288.325	CHERRY POINT APP CON 119.35 377.175	NEW RIVER TOWER ★ 120.00* 360.2	GND CON 121.8 254.275	CLNC DEL 239.025	ASR/PAR
--------------------------	---	---	---------------------------------	----------------------------	---------

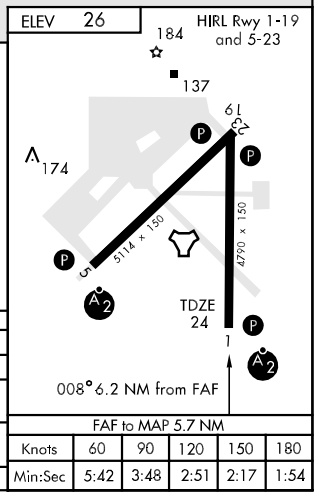
RADAR REQUIRED



EMERG SAFE ALT 100 NM 3400



CATEGORY	A	B	C	D
S-ILS 1 *	224-1/2	200 (200-1/2)	224-3/4	200 (200-3/4)
S-LOC 1 **	400-3/4	376 (400-3/4)	400-1	376 (400-1)
CIRCLING	500-1	474 (500-1)	500-1 1/2	580-2
S-PAR 1 ***	124-1/4	100 (100-1/4)	GS 3.0°	



SE-2, 22 OCT 2009 to 19 NOV 2009

SE-2, 22 OCT 2009 to 19 NOV 2009