

JAMESTOWN, NEW YORK

AL-731 (FAA)

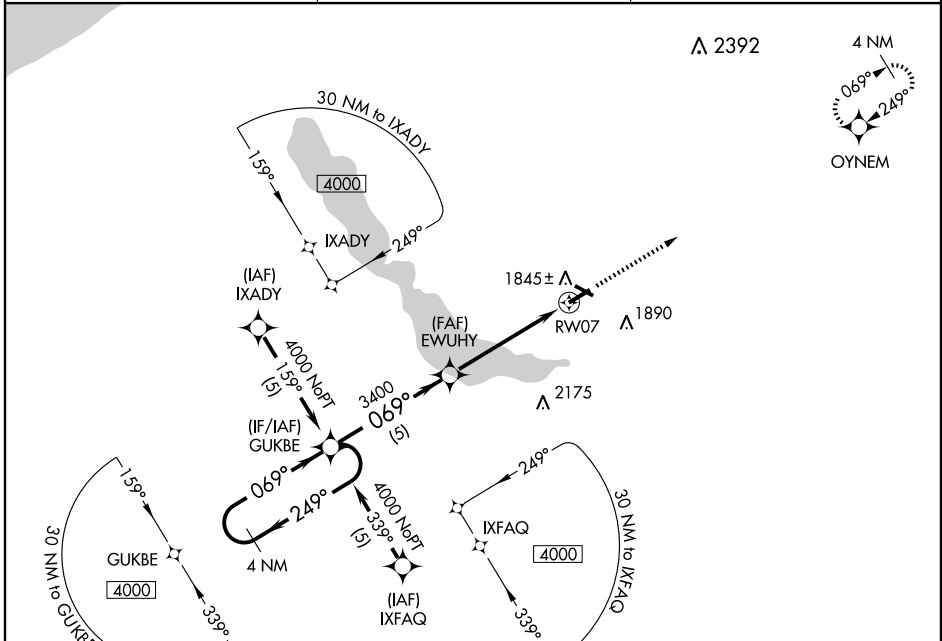
# RNAV (GPS) RWY 7

JAMESTOWN/ CHAUTAUQUA COUNTY/JAMESTOWN (JHW)

APP CRS <b>069°</b>	Rwy Idg <b>5299</b>
	TDZE <b>1722</b>
	Apt Elev <b>1723</b>

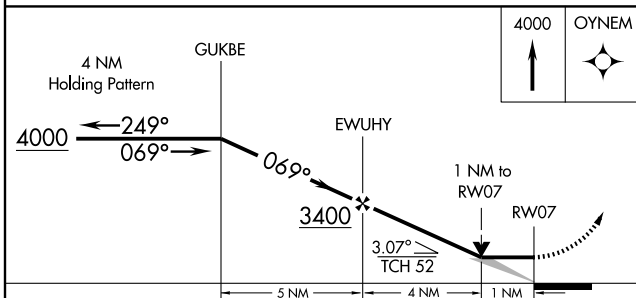
<p>GPS or RNP-0.3 required.</p> <p>NA</p>	<p>MISSED APPROACH: Climb to 4000 direct OYNEM WP and hold.</p>
---	---

AWOS-3 <b>118.425</b>	ERIE APP CON ★ <b>126.05</b>	UNICOM <b>122.7 (CTAF)</b>
--------------------------	---------------------------------	-------------------------------



NE-2, 22 OCT 2009 to 19 NOV 2009

NE-2, 22 OCT 2009 to 19 NOV 2009



CATEGORY	A	B	C	D
LNVA MDA	2100-1 378 (400-1)		2100-1¼ 378 (400-1¼)	
CIRCLING	2180-1	457 (500-1)	2240-1½ 517 (600-1½)	2280-2 557 (600-2)

ELEV 1723

REIL Rwy 31  
MIRL Rwy 13-31  
HIRL Rwy 7-25

JAMESTOWN, NEW YORK  
Orig 08101

JAMESTOWN/ CHAUTAUQUA COUNTY/JAMESTOWN (JHW)  
42°09'N - 79°15'W

# RNAV (GPS) RWY 7