

ILS RWY 25

JAMESTOWN/CHAUTAUQUA COUNTY/JAMESTOWN (JHW)

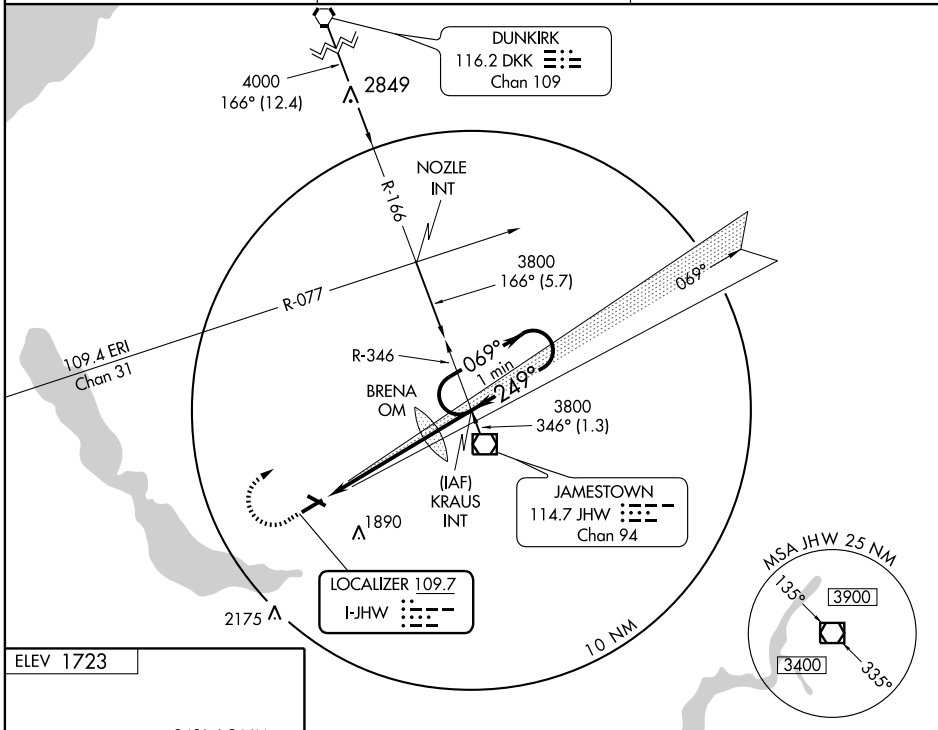
LOC I-JHW 109.7	APP CRS 249°	Rwy Idg 5299
		TDZE 1721
		Apt Elev 1723

▼ Inoperative table does not apply to S-ILS Cat A-D.
▲ NA For inoperative MALSR, increase S-LOC visibility CAT A-B to 1 mile.

MALSR

MISSED APPROACH: Climb to 2300, then climbing right turn to 3800 via LOC NE course to KRAUS Int and hold.

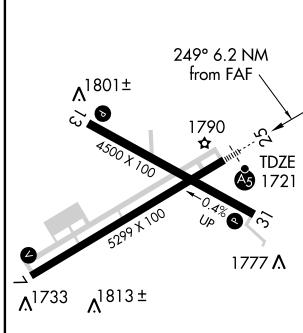
AWOS-3 118.425	ERIE APP CON ★ 126.05	UNICOM 122.7 (CTAF) 0
--------------------------	---------------------------------	---------------------------------



NE-2, 22 OCT 2009 to 19 NOV 2009

NE-2, 22 OCT 2009 to 19 NOV 2009

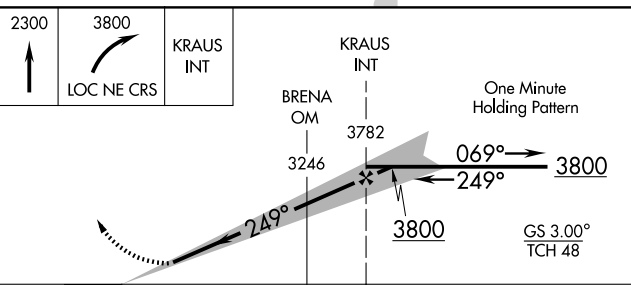
ELEV 1723



REIL Rwy 31
 MIRL Rwy 13-31
 HIRL Rwy 7-25

FAF to MAP 6.2 NM

Knots	60	90	120	150	180
Min:Sec	6:12	4:08	3:06	2:29	2:04



CATEGORY	A	B	C	D
S-ILS 25	1971- ³ / ₄ 250 (300- ³ / ₄)			
S-LOC 25	2200- ³ / ₄ 479 (500- ³ / ₄)			2200-1 479 (500-1)
CIRCLING	2200-1 477 (500-1)		2240-1 ¹ / ₂ 517 (600-1 ¹ / ₂)	2280-2 557 (600-2)

ILS RWY 25