

VORTAC OSH 111.8 Chan 55	APP CRS 090°	Rwy Idg TDZE Apt Elev	6178 797 808
---------------------------------------	------------------------	-----------------------------	---

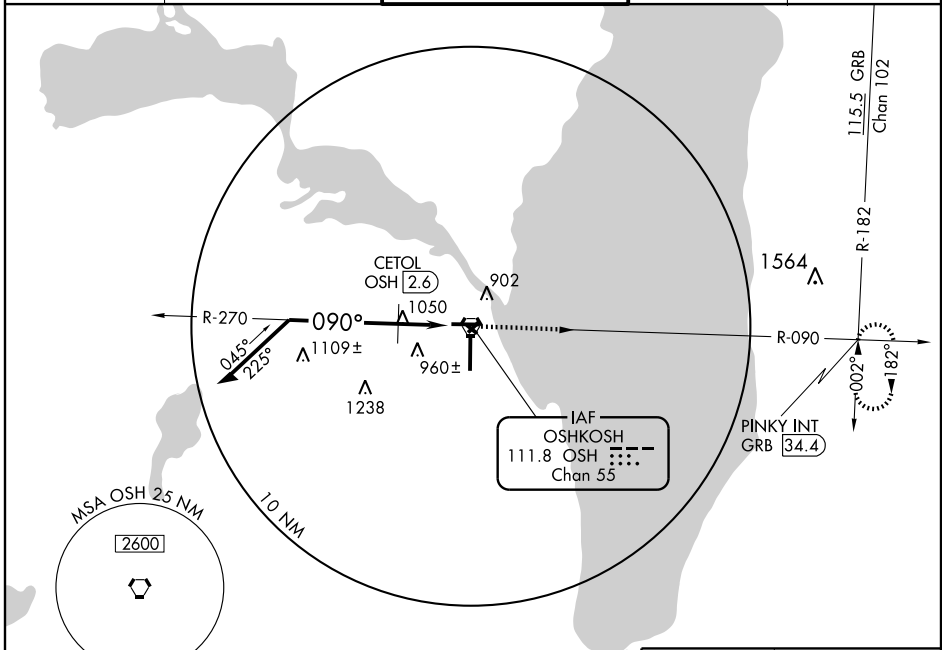
VOR RWY 9

OSHKOSH/ WITTMAN RGNL (OSH)

⚠ When local altimeter setting not received, use Fond Du Lac County altimeter setting and increase all MDAs 40 feet and CETOL fix minimums visibility Cat. C and D ¼ mile and circling Cat. C ¼ mile.

⚠ MISSED APPROACH: Climb to 3000 via OSH VORTAC R-090 to PINKY Int/GRB 34.4 DME and hold.

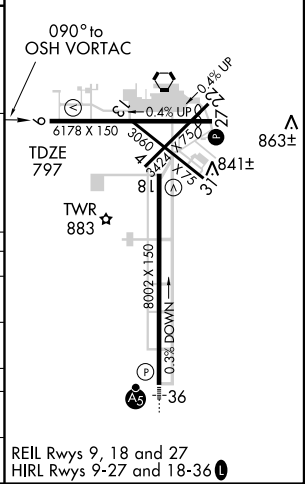
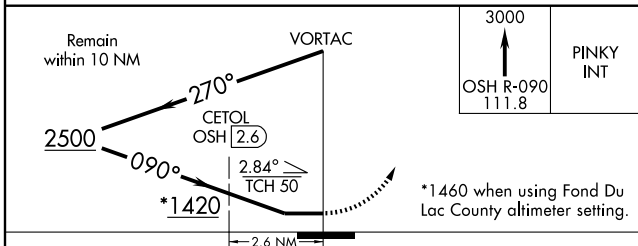
ATIS 125.9	MILWAUKEE APP CON 127.0 263.075	OSHKOSH TOWER ★ 118.5(CTAF) 257.6	GND CON 121.9	UNICOM 122.95
----------------------	---	---	-------------------------	-------------------------



EC-3, 22 OCT 2009 to 19 NOV 2009

EC-3, 22 OCT 2009 to 19 NOV 2009

ELEV 808



CATEGORY	A	B	C	D
S-9	1420-1	623 (700-1)	1420-1¾ 623 (700-1¾)	1420-2 623 (700-2)
CIRCLING	1420-1	612 (700-1)	1420-1¾ 612 (700-1¾)	1420-2 612 (700-2)
CETOL FIX MINIMUMS				
S-9	1360-1	563 (600-1)	1360-1½ 563 (600-1½)	1360-1¾ 563 (600-1¾)
CIRCLING	1360-1	552 (600-1)	1360-1½ 552 (600-1½)	1360-2 552 (600-2)