

VORTAC OSH <b>111.8</b> Chan <b>55</b>	APP CRS <b>186°</b>	Rwy Idg TDZE <b>793</b> Apt Elev <b>808</b>
--	------------------------	---

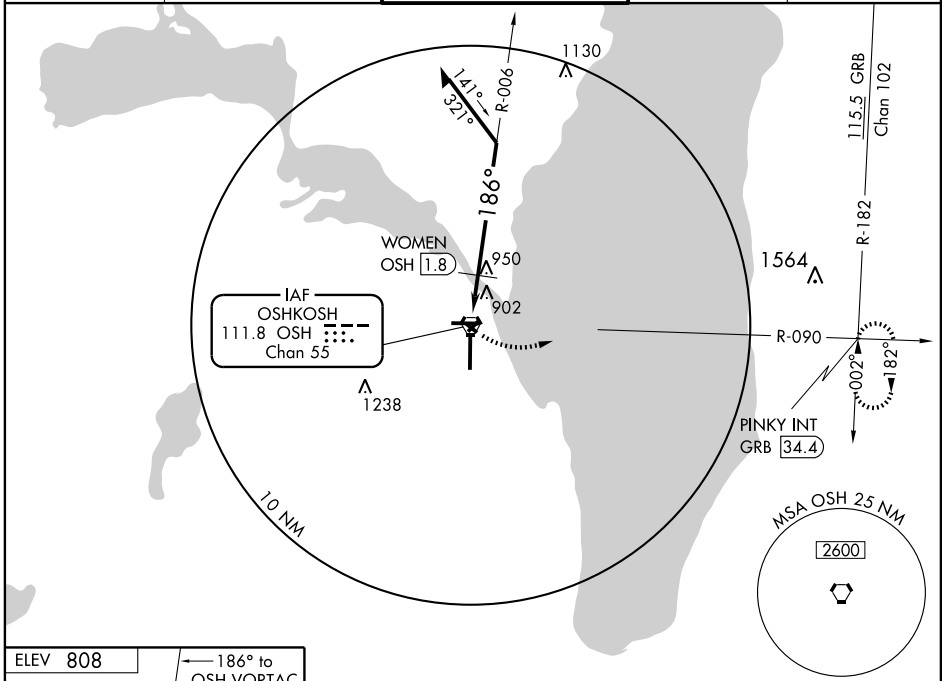
# VOR RWY 18

OSHKOSH/ WITTMAN RGNL (OSH)

**⚠** Visibility reduction by helicopters NA. When local altimeter setting not received, use Fond Du Lac County altimeter setting and increase all MDAs 40 feet. Increase WOMEN S-18 Cat. C visibility ¼ mile. VDP NA when using Fond Du Lac County altimeter setting.

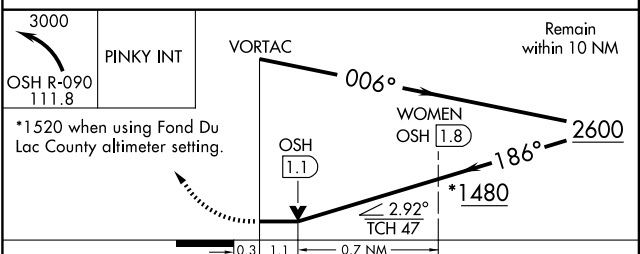
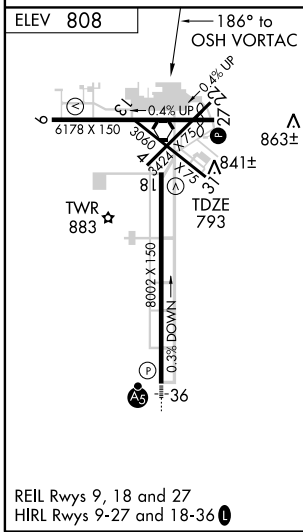
**MISSED APPROACH:** Climbing left turn to 3000 via OSH VORTAC R-090 to PINKY Int/GRB 34.4 DME and hold.

ATIS <b>125.9</b>	MILWAUKEE APP CON <b>127.0 263.075</b>	<b>OSHKOSH TOWER ★</b> <b>118.5(CTAF) 257.6</b>	GND CON <b>121.9</b>	UNICOM <b>122.95</b>
----------------------	---	--	-------------------------	-------------------------



EC-3, 22 OCT 2009 to 19 NOV 2009

EC-3, 22 OCT 2009 to 19 NOV 2009



CATEGORY	A	B	C	D
S-18	1480-1 687 (700-1)		1480-2 687 (700-2)	1480-2½ 687 (700-2½)
CIRCLING	1480-1 672 (700-1)		1480-2 672 (700-2)	1480-2½ 672 (700-2½)
<b>WOMEN FIX MINIMUMS</b>				
S-18	1260-1 467 (500-1)		1260-1¼ 467 (500-1¼)	1260-1½ 467 (500-1½)
CIRCLING	1280-1 472 (500-1)		1300-1½ 492 (500-1½)	1360-2 552 (600-2)