

RNAV (GPS) RWY 9

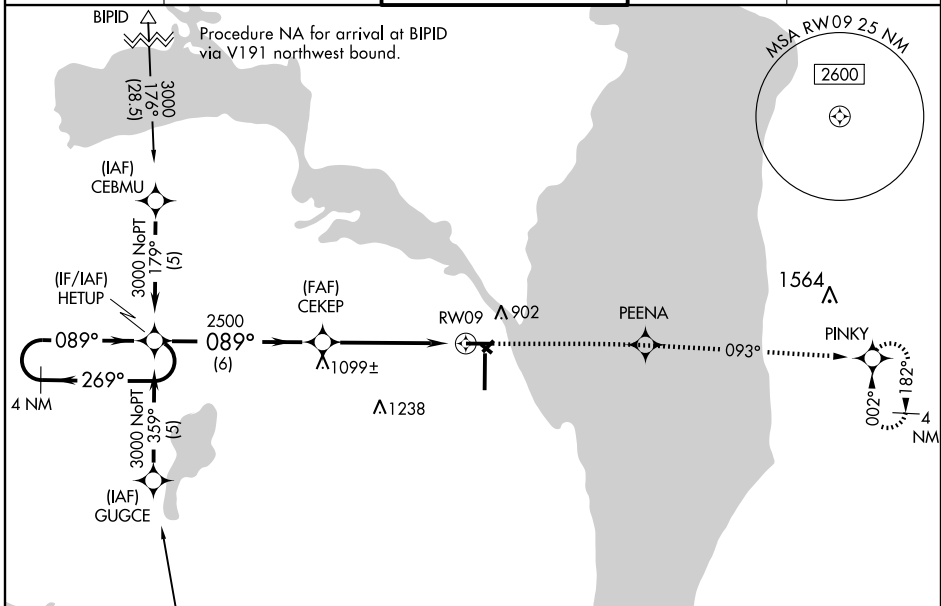
OSHKOSH/ WITTMAN RGNL (OSH)

APP CRS	Rwy Idg	6178
089°	TDZE	797
	Apt Elev	808

⚠ When local altimeter setting not received, use Fond Du Lac County altimeter setting and increase all MDA 40 feet, increase S-9 visibility Cat. C and Cat. D ¼ mile and circling Cat. C ¼ mile. VDP NA when using Fond Du Lac County altimeter setting. DME/DME RNP-0.3 NA.

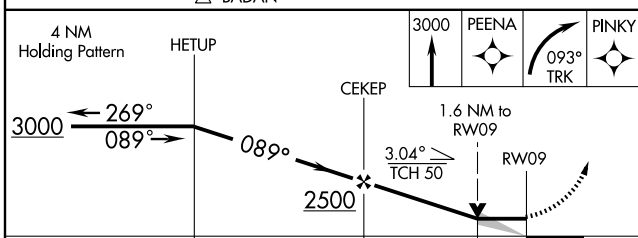
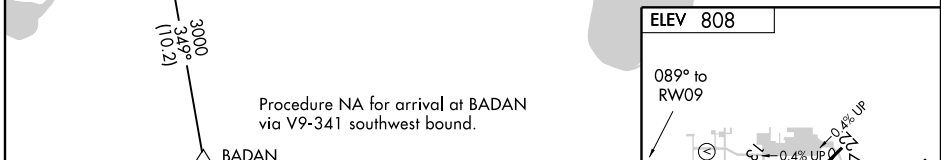
MISSED APPROACH: Climb to 3000 direct PEENA and right turn via 093° track to PINKY and hold.

ATIS 125.9	MILWAUKEE APP CON 127.0 263.075	OSHKOSH TOWER ★ 118.5(CTAF) 257.6	GND CON 121.9	UNICOM 122.95
----------------------	---	---	-------------------------	-------------------------



EC-3, 22 OCT 2009 to 19 NOV 2009

EC-3, 22 OCT 2009 to 19 NOV 2009



CATEGORY	A	B	C	D
LNVA MDA	1360-1	563 (600-1)	1360-1½ 563 (600-1½)	1360-1¾ 563 (600-1¾)
CIRCLING	1360-1	552 (600-1)	1360-1½ 552 (600-1½)	1360-2 552 (600-2)

REIL Rws 9, 18, and 27
HIRL Rws 9-27, and 18-36