

APP CRS 270°	Rwy Idg 5647
	TDZE 782
	Apt Elev 808

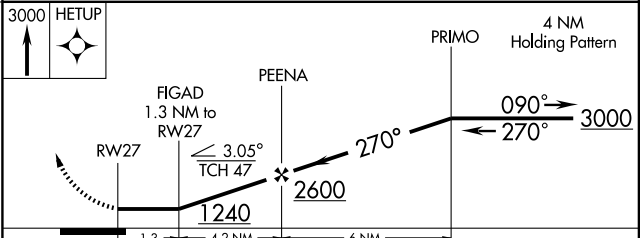
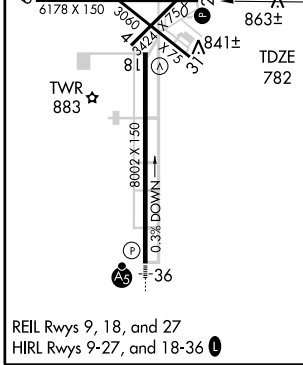
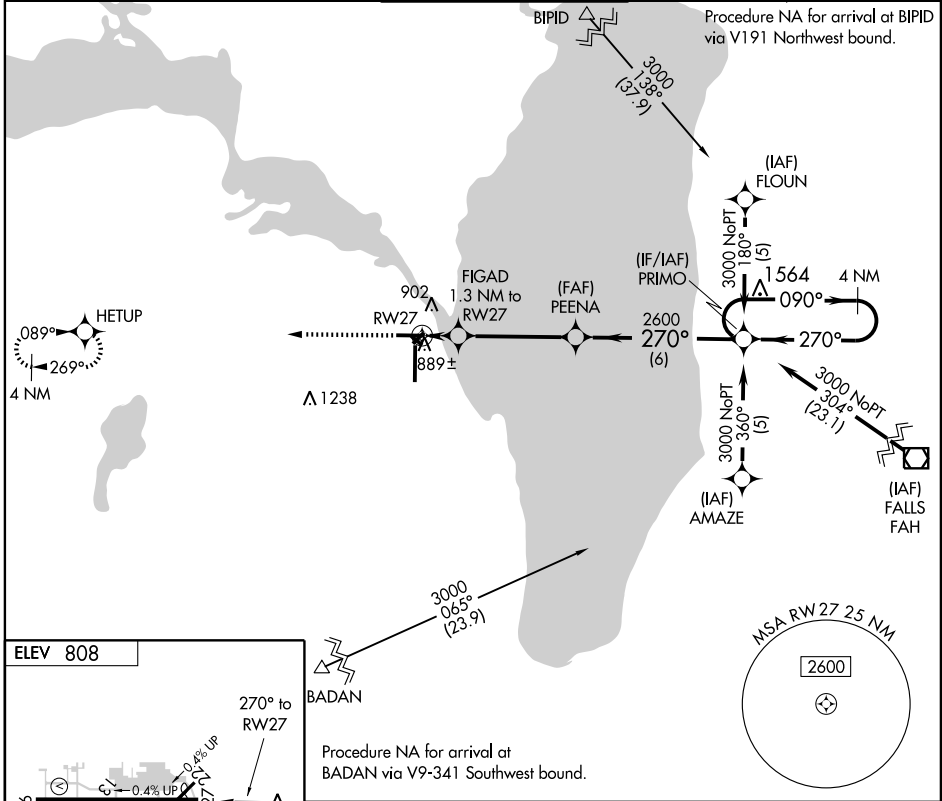
RNAV (GPS) RWY 27

OSHKOSH/ WITTMAN RGNL (OSH)

▼ When local altimeter setting not received, use Fond Du Lac County altimeter setting and increase all MDAs 40 feet. Visibility reduction by helicopters NA. DME/DME RNP-0.3 NA.

MISSED APPROACH: Climb to 3000 direct HETUP and hold.

ATIS 125.9	MILWAUKEE APP CON 127.0 263.075	OSHKOSH TOWER ★ 118.5 (CTAF) 257.6	GND CON 121.9	UNICOM 122.95
----------------------	---	--	-------------------------	-------------------------



CATEGORY	A	B	C	D
LNAV MDA	1140-1 358 (400-1)		1140-1¼ 358 (400-1¼)	
CIRCLING	1280-1	472 (500-1)	1300-1½ 492 (500-1½)	1360-2 552 (600-2)

EC-3, 22 OCT 2009 to 19 NOV 2009

EC-3, 22 OCT 2009 to 19 NOV 2009