

OSHKOSH, WISCONSIN

AL-730 (FAA)

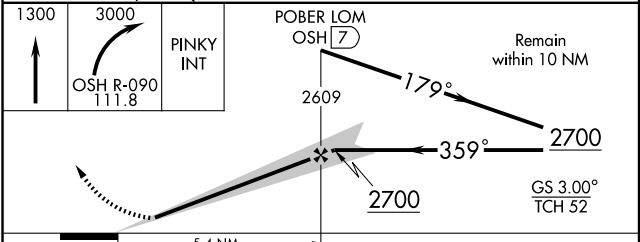
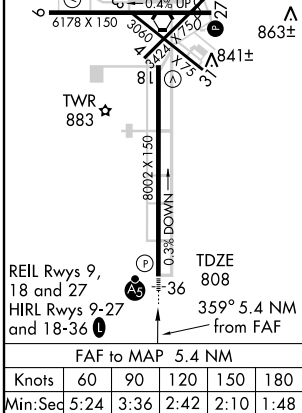
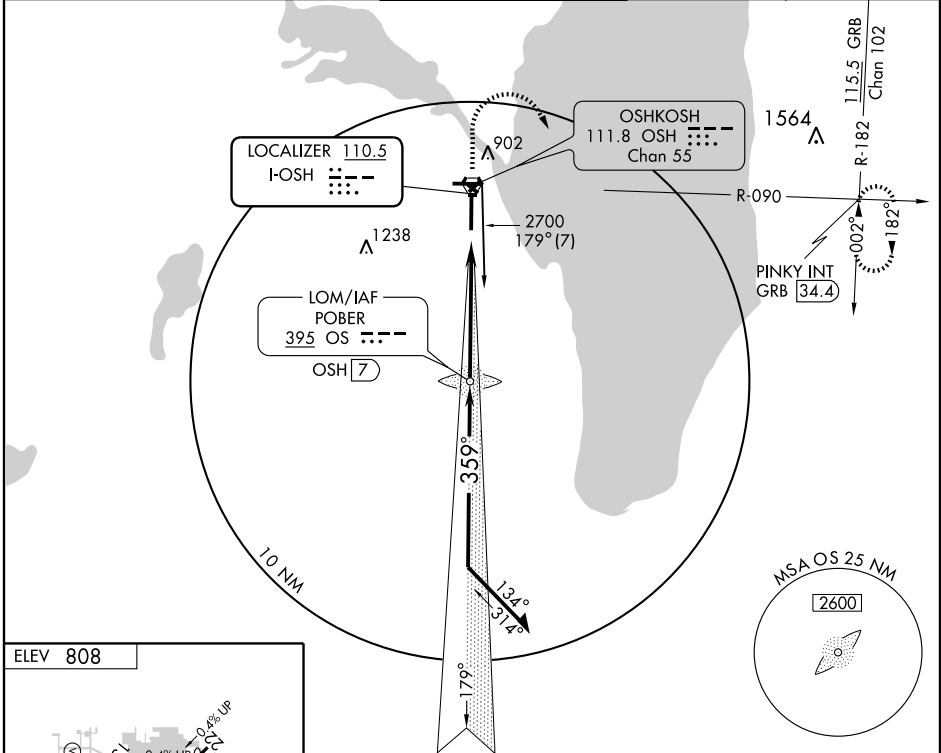
ILS or LOC RWY 36

OSHKOSH/ WITTMAN RGNL (OSH)

LOC I-OSH 110.5	APP CRS 359°	Rwy Idg 800Z
		TDZE 808
		Apt Elev 808

	* RVR 1800 authorized with the use of FD or AP or HUD to DA.	MALSRL 	MISSED APPROACH: Climb to 3000 then climbing right turn to 3000 via OSH R-090 to PINKY Int and hold.
		45	

ATIS 125.9	MILWAUKEE APP CON 127.0 263.075	OSHKOSH TOWER ★ 118.5 (CTAF) 257.6	GND CON 121.9	UNICOM 122.95
----------------------	---	--	-------------------------	-------------------------



CATEGORY	A	B	C	D
S-ILS 36	*1008/24 200 (200-1/2)			
S-LOC 36	1240/24	432 (500-1/2)	1240/40 432 (500-3/4)	1240/50 432 (500-1)
CIRCLING	1260-1	452 (500-1)	1260-1 1/2 452 (500-1 1/2)	1360-2 552 (600-2)

OSHKOSH, WISCONSIN
Amdt 6D 09295

43° 59' N - 88° 33' W

OSHKOSH/ WITTMAN RGNL (OSH)
ILS or LOC RWY 36

EC-3, 22 OCT 2009 to 19 NOV 2009

EC-3, 22 OCT 2009 to 19 NOV 2009