

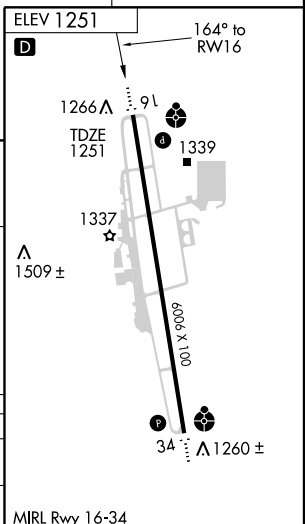
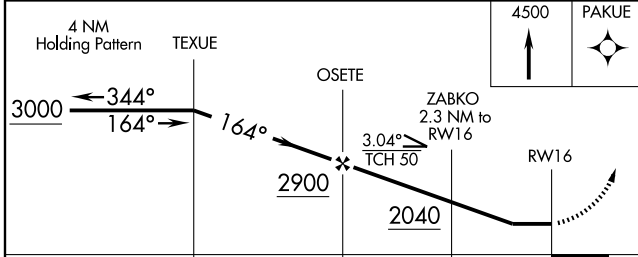
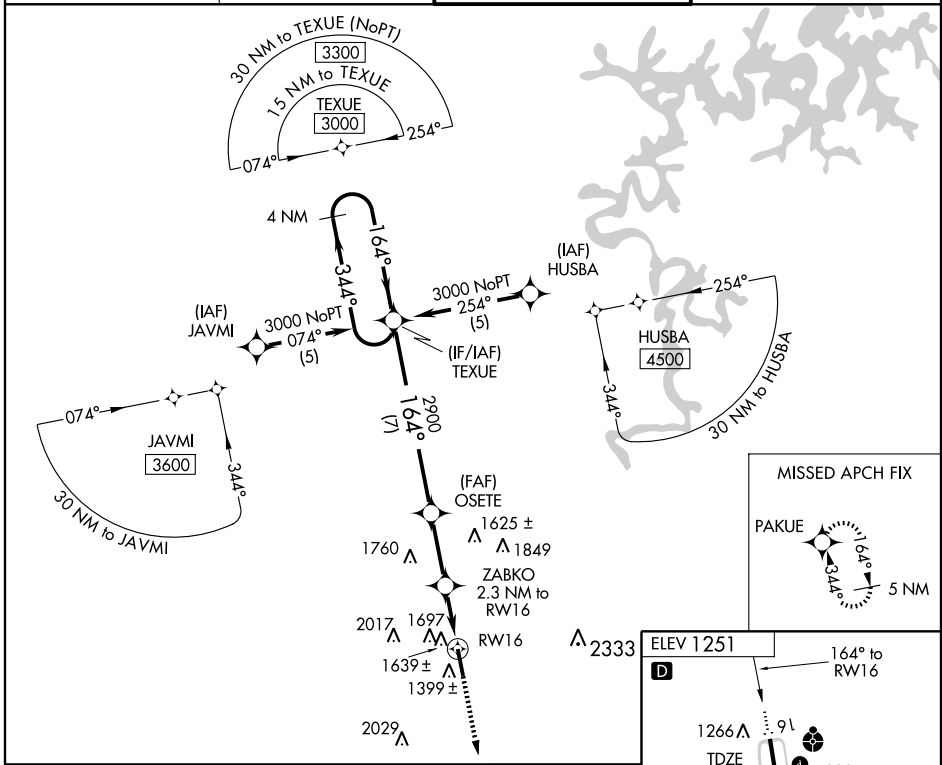
# RNAV (GPS) RWY 16

FAYETTEVILLE/ DRAKE FIELD (F'YV)

APP CRS	Rwy Idg	<b>6006</b>
<b>164°</b>	TDZE	<b>1251</b>
	Apt Elev	<b>1251</b>

<p><b>▼</b> Inoperative table does not apply. DME/DME RNP-0.3 NA. Visibility reduction by helicopters NA. When local altimeter setting not received, use Springdale altimeter setting and increase all MDA 40 feet. Increase LNAV Cat C/D visibility ASR ¼ mile. Circling NA east of Rwy 16-34.</p>	<p><b>ODALS</b></p>	<p><b>MISSED APPROACH:</b> Climb to 4500 direct PAKUE and hold.</p>
---	---------------------	---

<p><b>ATIS</b></p> <p><b>119.575</b></p>	<p><b>RAZORBACK APP CON*</b></p> <p><b>121.0 244.57</b></p>	<p><b>DRAKE TOWER*</b></p> <p><b>128.0 (CTAF) 0 371.9</b></p>	<p><b>GND CON</b></p> <p><b>121.8</b></p>
--	---	---	---



CATEGORY	A	B	C	D
LNAV MDA	1920-1	669 (700-1)	1920-1¾ 669 (700-1¾)	1920-2 669 (700-2)
CIRCLING	2000-1 749 (800-1)	2000-1¼ 749 (800-1¼)	2000-2¼ 749 (800-2¼)	2260-3 1009 (1100-3)

SC-1, 22 OCT 2009 to 19 NOV 2009

SC-1, 22 OCT 2009 to 19 NOV 2009