

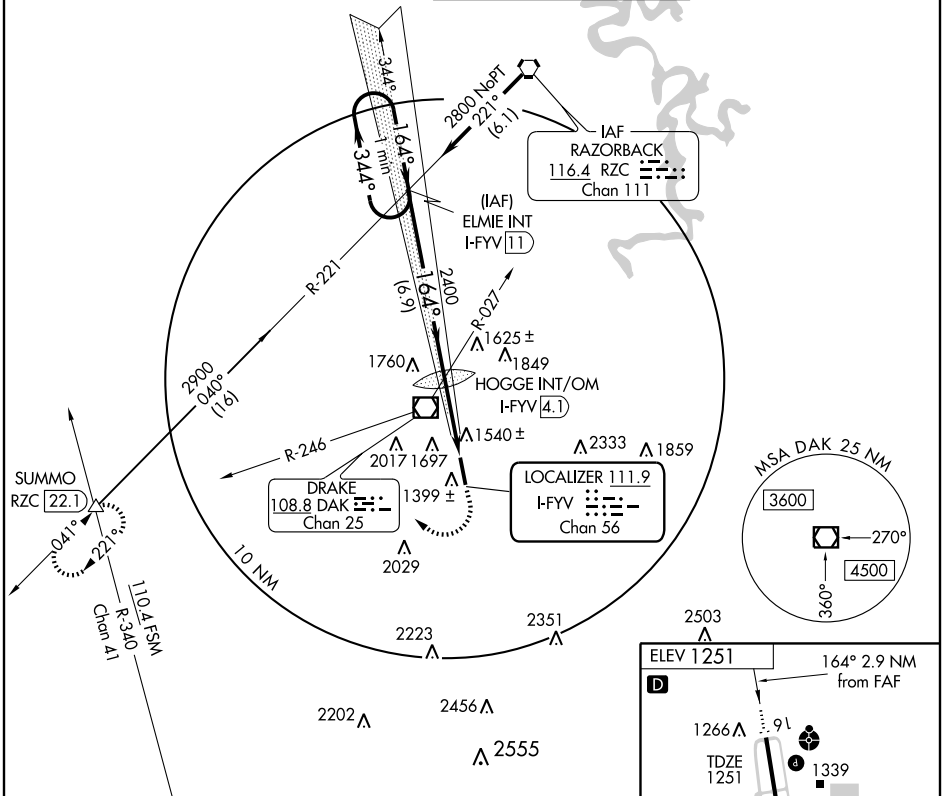
LOC RWY 16

FAYETTEVILLE/ DRAKE FIELD (FYV)

LOC/DME I-FYV 111.9 Chan 56	APP CRS 164°	Rwy Idg 6006 TDZE 1251 Apt Elev 1251
---	------------------------	---

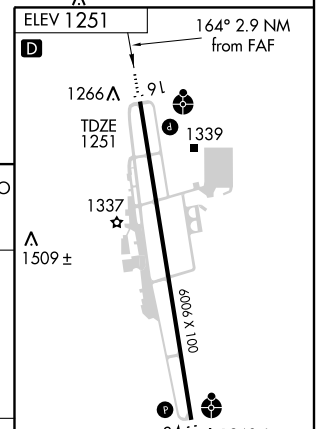
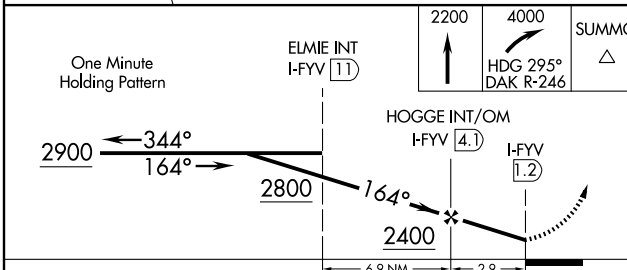
<p>ASR Circling not authorized east of Rwy 16-34. Inoperative table does not apply.</p>	<p>ODALS</p>	<p>MISSED APPROACH: Climb to 2200 then climbing right turn to 4000 via heading 295° and DAK R-246 to SUMMO Int and hold.</p>
--	---------------------	---

<p>ATIS 119.575</p>	<p>RAZORBACK APP CON * 121.0 244.57</p>	<p>DRAKE TOWER * 128.0 (CTAF) 0 371.9</p>	<p>GND CON 121.8</p>
---------------------------------------	---	---	--



SC-1, 22 OCT 2009 to 19 NOV 2009

SC-1, 22 OCT 2009 to 19 NOV 2009



CATEGORY	A	B	C	D	MIRL Rwy 16-34
S-16	1760-1	509 (600-1)	1760-1½	509 (600-1½)	FAF to MAP 2.9 NM
CIRCLING	2000-1	2000-1¼	2000-2¼	2300-3	Knots 60 90 120 150 180
	749 (800-1)	749 (800-1¼)	749 (800-2¼)	1049 (1100-3)	Min:Sec 2:54 1:56 1:27 1:10 0:58