

OKMULGEE, OKLAHOMA

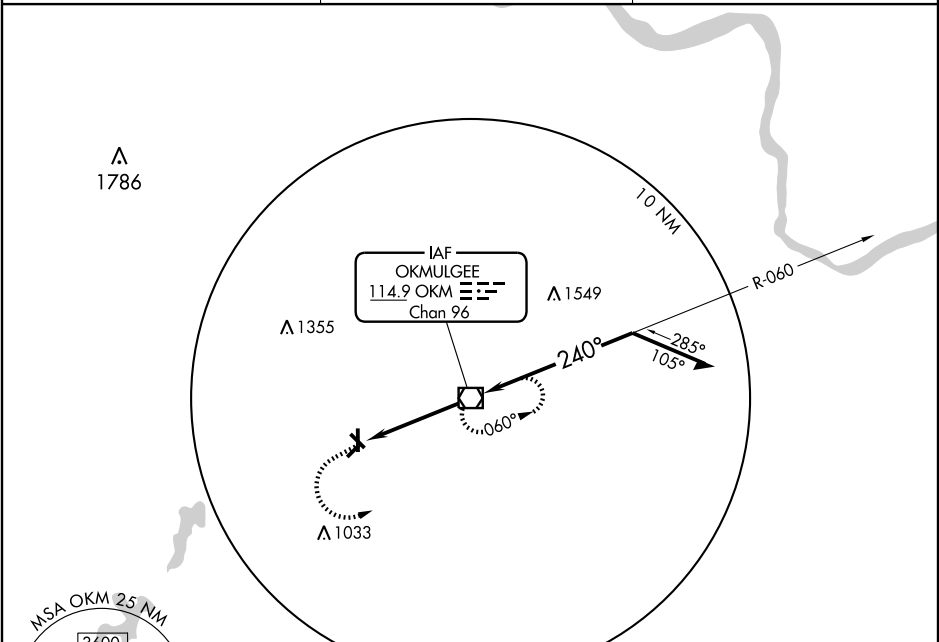
AL-727 (FAA)

VOR/DME OKM 114.9 Chan 96	APP CRS 240°	Rwy Idg TDZE Apt Elev	N/A N/A 720
---	------------------------	-----------------------------	--

VOR-A
OKMULGEE RGNL (OKM)

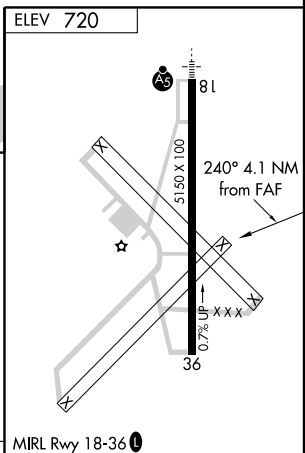
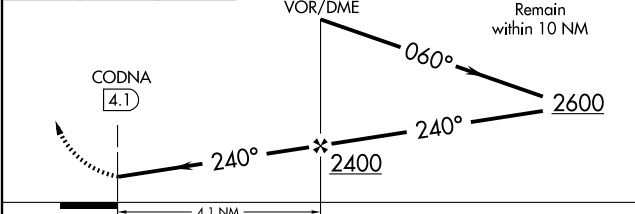
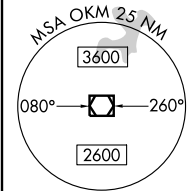
⚠ NA If local altimeter setting not received, use Tulsa Intl altimeter setting and increase all MDA's 80 feet. **MISSED APPROACH:** Climb to 2600 then left turn direct OKM VOR/DME and hold.

AWOS-3 118.225	TULSA APP CON 119.85 338.3	UNICOM 123.0 (CTAF) 0
--------------------------	--------------------------------------	---------------------------------



SC-1, 22 OCT 2009 to 19 NOV 2009

SC-1, 22 OCT 2009 to 19 NOV 2009



CATEGORY	A	B	C	D
CIRCLING	1140-1 420 (500-1)	1180-1 460 (500-1)	1300-1½ 580 (600-1½)	NA

FAF to MAP 4.1 NM					
Knots	60	90	120	150	180
Min:Sec	4:06	2:44	2:03	1:38	1:22

OKMULGEE, OKLAHOMA
Amdt 1 07298

35°40'N - 95°57'W

OKMULGEE RGNL (OKM)
VOR-A