

RNAV (GPS) RWY 18

OKMULGEE RGNL (OKM)

WAAS CH 82105 W18A	APP CRS 176°	Rwy Idg 5150 TDZE 720 Apt Elev 720
--	------------------------	---

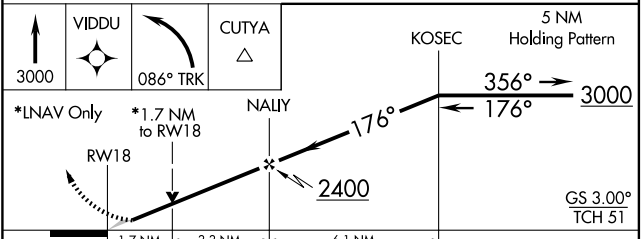
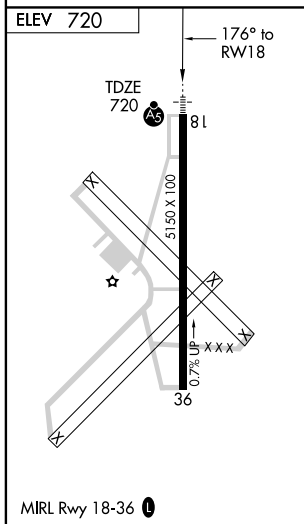
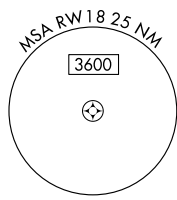
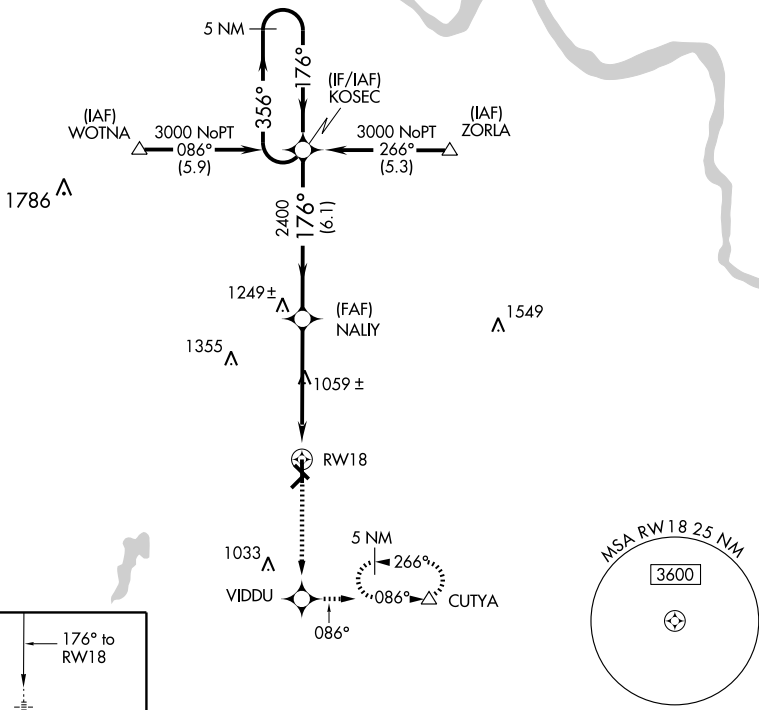
▼ If local altimeter setting not received, use Tulsa Intl altimeter setting and increase all DAs/MDAs 80 feet.
▲ DME/DME RNP-0.3 NA. VDP NA with Tulsa Intl altimeter setting.



MISSED APPROACH: Climb to 3000 direct VIDDU and left turn via 086° track to CUTYA and hold, continue climb-in-hold to 3000.

AWOS-3 118.225	TULSA APP CON 119.85 338.3	UNICOM 123.0 (CTAF) 0
--------------------------	--------------------------------------	---------------------------------

Procedure NA for arrivals at WOTNA on V532 northwest bound.



CATEGORY	A	B	C	D
LPV DA	970-1/2 250 (300-1/2)			NA
LNAV MDA	1320-1/2	600 (600-1/2)	1320-1 600 (600-1)	NA
CIRCLING	1320-1	600 (700-1)	1320-1 1/2 600 (700-1 1/2)	NA

SC-1, 22 OCT 2009 to 19 NOV 2009

SC-1, 22 OCT 2009 to 19 NOV 2009