

OKMULGEE, OKLAHOMA

AL-727 (FAA)

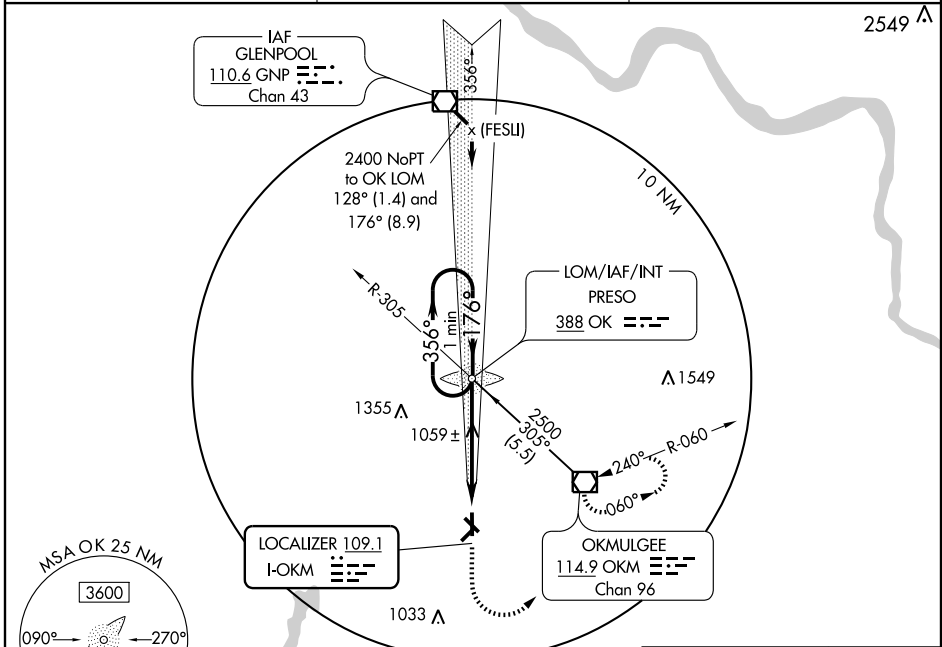
ILS or LOC RWY 18

OKMULGEE RGNL (OKM)

LOC I-OKM 109.1	APP CRS 176°	Rwy Idg 5150
		TDZE 720
		Apt Elev 720

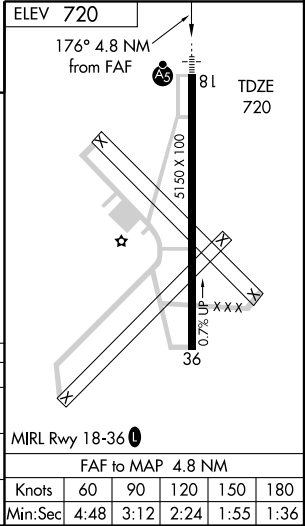
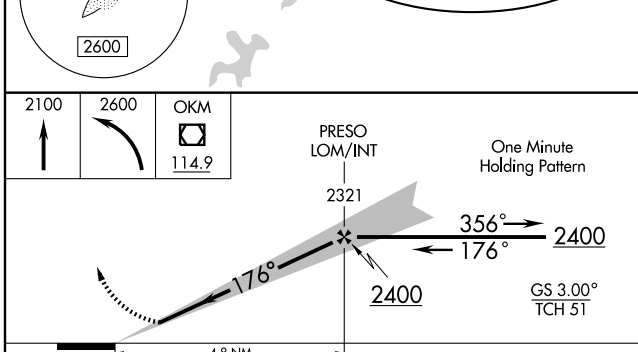
<p>▼ NA</p> <p>▲ NA</p> <p>If local altimeter setting not received, use Tulsa Intl altimeter setting and increase all DAs/MDAs 80 feet.</p>	<p>MALSR</p>	<p>MISSED APPROACH: Climb to 2100 then climbing left turn to 2600 direct OKM VOR/DME and hold.</p>
---	--------------	--

<p>AWOS-3</p> <p>118.225</p>	<p>TULSA APP CON</p> <p>119.85 338.3</p>	<p>UNICOM</p> <p>123.0 (CTAF) 0</p>
-------------------------------------	---	--



SC-1, 22 OCT 2009 to 19 NOV 2009

SC-1, 22 OCT 2009 to 19 NOV 2009



CATEGORY	A	B	C	D
S-ILS 18	920-½ 200 (200-½)			NA
S-LOC 18	1320-½	600 (600-½)	1320-1 600 (600-1)	NA
CIRCLING	1320-1	600 (600-1)	1320-1½ 600 (600-½)	NA

OKMULGEE, OKLAHOMA
Amdt 1A 07298

35°40'N - 95°57'W

ILS or LOC RWY 18