

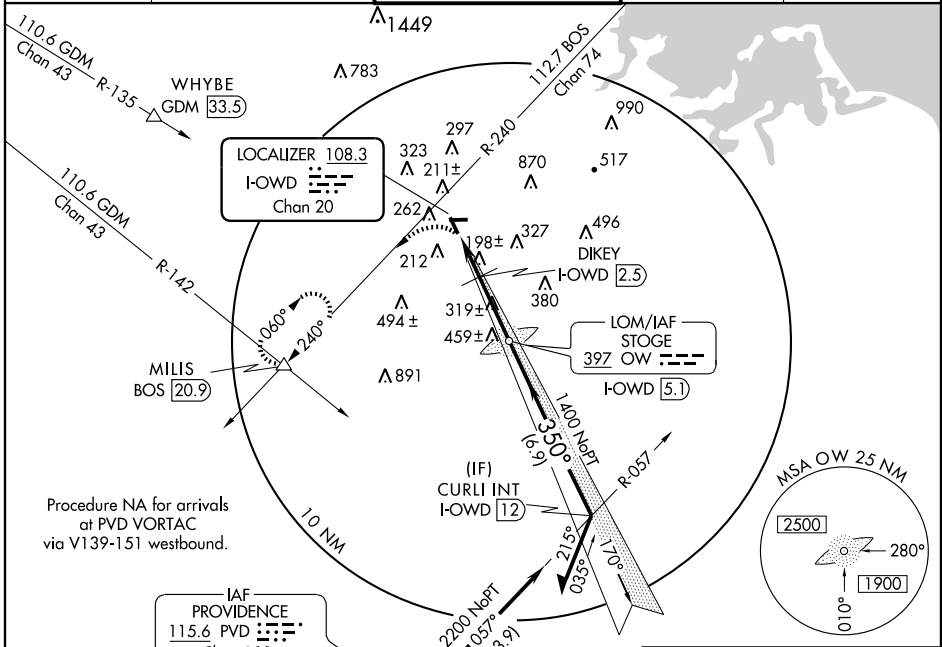
LOC RWY 35

NORWOOD MEMORIAL (OWD)

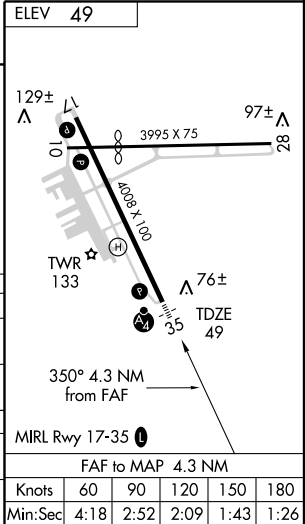
LOC/DME I-OWD 108.3 Chan 20	APP CRS 350°	Rwy Idg 4008 TDZE 49 Apt Elev 49
--	------------------------	---

<p>⚠ Circling to Rwy 10/28 NA at night. ⚠ Inoperative table does not apply to Cat C.</p>	<p>MALSF ⚠ -</p>	<p>MISSED APPROACH: Climbing left turn to 3000 via BOS VOR/DME R-240 to MILIS INT/BOS 20.9 DME and hold, continue climb-in-hold to 3000.</p>
--	------------------------------------	---

<p>ATIS 119.95</p>	<p>BOSTON APP CON 124.1 263.1</p>	<p>NORWOOD TOWER ★ 126.0 (CTAF) 0</p>	<p>GND CON 121.8</p>	<p>CLNC DEL 121.8</p>
-------------------------------	--	--	---------------------------------	----------------------------------



3000	MILIS	LOM I-OWD 5.1	Remain within 10 NM	
BOS R-240 112.7	DIKEY I-OWD 2.5	170°	2100	
I-OWD 0.8	580	350°	1400	
	1.7 NM	2.6 NM	2.87° TCH 40	
CATEGORY	A	B	C	D
S-35	580-¾ 531 (600-¾)		580-1½ 531 (600-1½)	580-1¾ 531 (600-1¾)
CIRCLING	600-1 551 (600-1)		640-1½ 591 (600-1½)	680-2 631 (700-2)
DIKEY FIX MINIMUMS				
S-35	500-¾ 451 (500-¾)		500-1¼ 451 (500-1¼)	500-1½ 451 (500-1½)
CIRCLING	600-1 551 (600-1)		640-1½ 591 (600-1½)	680-2 631 (700-2)



NE-1, 22 OCT 2009 to 19 NOV 2009

NE-1, 22 OCT 2009 to 19 NOV 2009