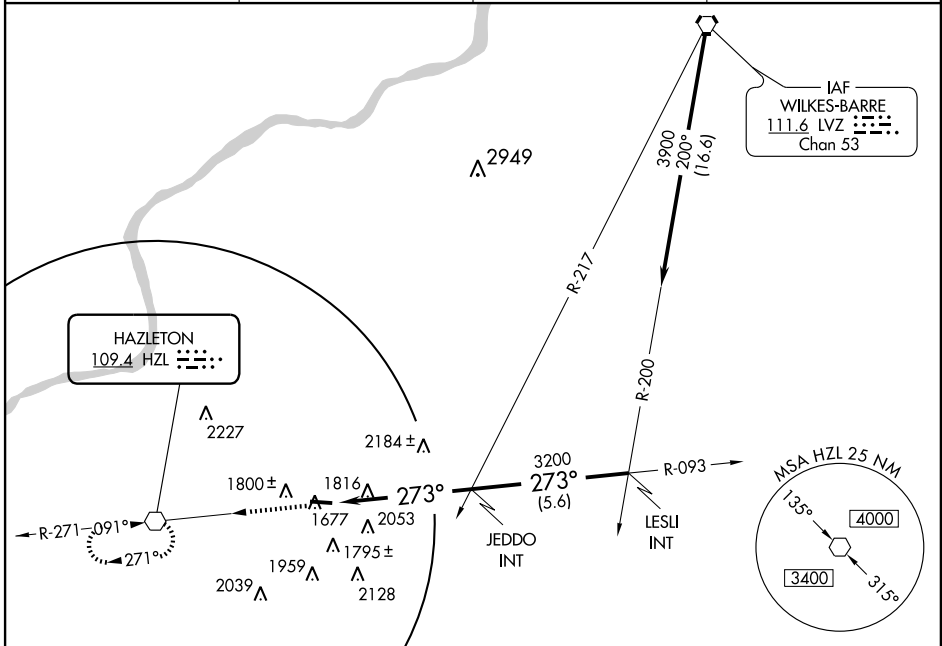


**VOR RWY 28**  
HAZLETON MUNI (HZL)

VOR HZL <b>109.4</b>	APP CRS <b>273°</b>	Rwy Idg <b>4898</b>
		TDZE <b>1603</b>
		Apt Elev <b>1603</b>

<p>▼ Inoperative table does not apply.</p> <p>▲ NA</p>	<p>MALSF</p> <p>⬤</p>	<p>MISSED APPROACH: Climb to 3500 direct to HZL VOR and hold.</p>
--	-----------------------	---

<p>AWOS-3 <b>119.975</b></p>	<p>WILKES-BARRE APP CON <b>126.3 256.7</b></p>	<p>CLNC DEL <b>121.7</b></p>	<p>UNICOM <b>123.0 (CTAF) 0</b></p>
----------------------------------	--	----------------------------------	---



NE-4, 22 OCT 2009 to 19 NOV 2009

NE-4, 22 OCT 2009 to 19 NOV 2009

