

# VOR RWY 10

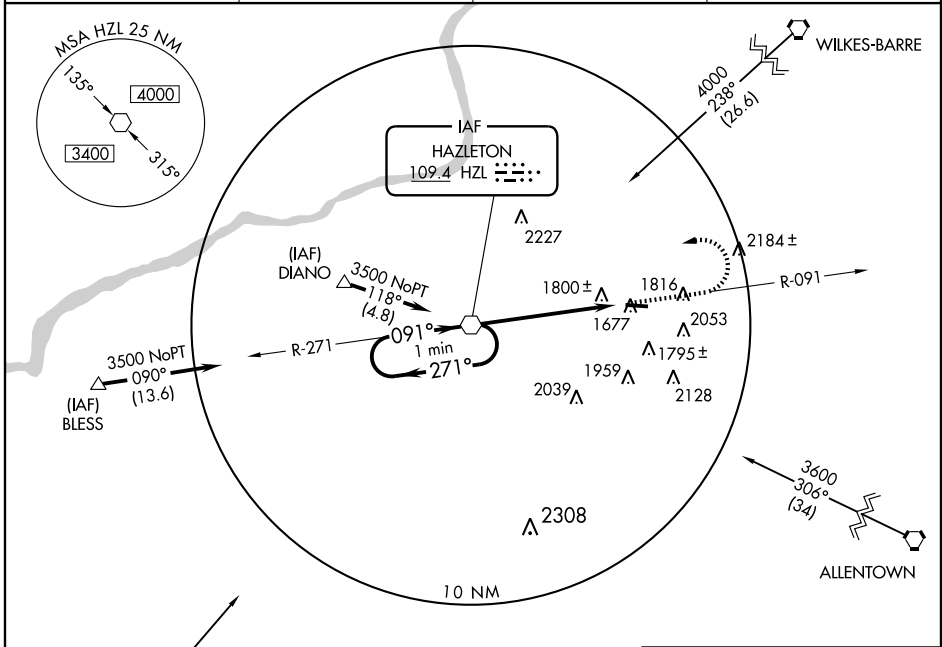
HAZLETON MUNI (HZZL)

VOR HZL <b>109.4</b>	APP CRS <b>091°</b>	Rwy Idg TDZE Apt Elev	<b>4898</b> <b>1603</b> <b>1603</b>
-------------------------	------------------------	-----------------------------	---

**▼**  
**▲** NA

MISSED APPROACH: Climb on HZL R-091 to 3200 then climbing left turn to 3500 direct HZL VOR and hold.

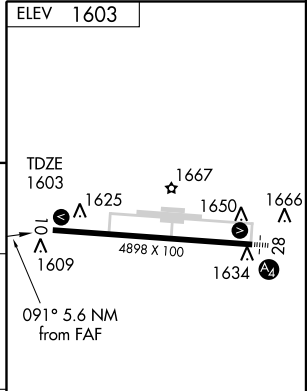
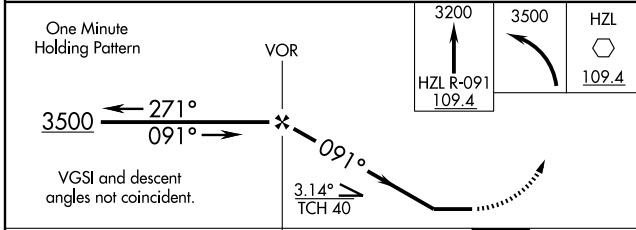
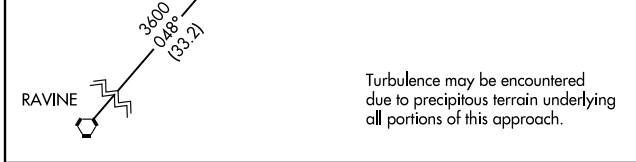
AWOS-3 <b>119.975</b>	WILKES-BARRE APP CON <b>126.3 256.7</b>	CLNC DEL <b>121.7</b>	UNICOM <b>123.0 (CTAF) 0</b>
--------------------------	--	--------------------------	---------------------------------



NE-4, 22 OCT 2009 to 19 NOV 2009

NE-4, 22 OCT 2009 to 19 NOV 2009

Turbulence may be encountered due to precipitous terrain underlying all portions of this approach.



CATEGORY	A	B	C	D
S-10	2300-1 697 (700-1)		2300-2 697 (700-2)	2300-2 1/4 697 (700-2 1/4)
CIRCLING	2300-1 697 (700-1)		2380-2 1/4 777 (800-2 1/4)	2380-2 1/2 777 (800-2 1/2)

REIL Rwy 10 0  
MIRL Rwy 10-28 0

FAF to MAP 5.6 NM

Knots	60	90	120	150	180
Min:Sec	5:36	3:44	2:48	2:14	1:52