

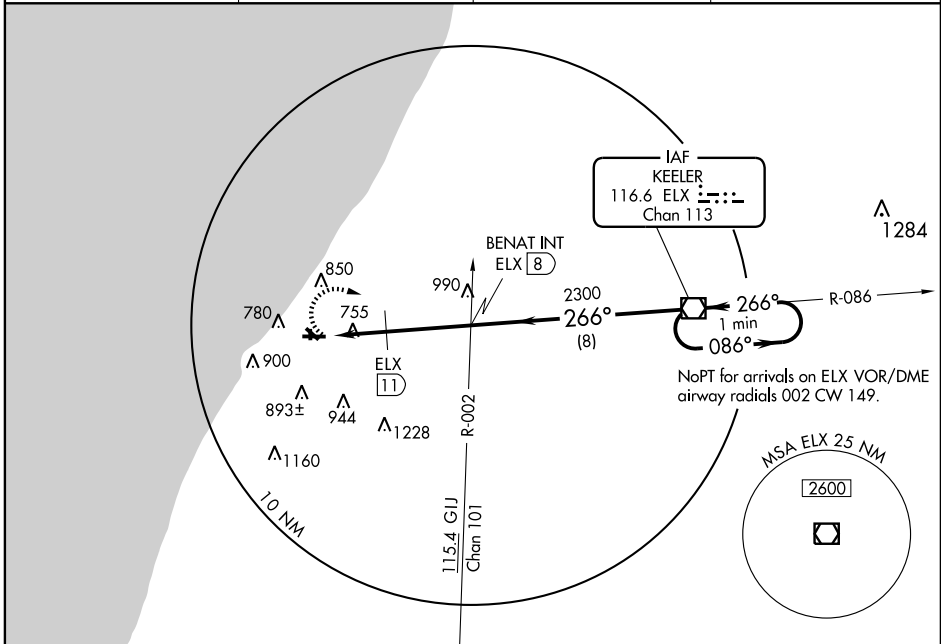
# VOR RWY 27

BENTON HARBOR/SOUTHWEST MICHIGAN RGNL (BEH)

VOR/DME ELX <b>116.6</b> Chan <b>113</b>	APP CRS <b>266°</b>	Rwy Idg TDZE <b>637</b> Apt Elev <b>643</b>
--	------------------------	---

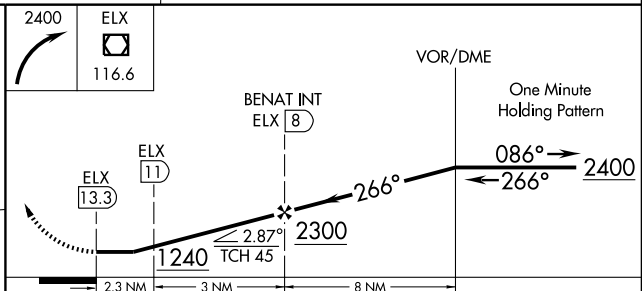
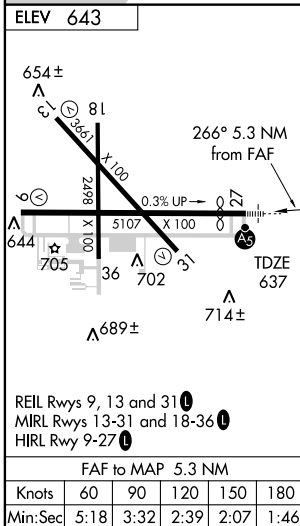
Cats A and B S-27 visibility increased ¼ mile for inoperative MALSRL.	MALSRL	MISSED APPROACH: Climbing right turn to 2400 direct ELX VOR/DME and hold.
---	--------	---

ASOS <b>121.55</b>	SOUTH BEND APP CON * <b>118.55 257.8</b>	SOUTH BEND CLNC DEL <b>119.7</b>	UNICOM <b>123.0 (CTAF) 0</b>
-----------------------	---	-------------------------------------	---------------------------------



EC-1, 22 OCT 2009 to 19 NOV 2009

EC-1, 22 OCT 2009 to 19 NOV 2009



CATEGORY	VOR/DME			
	A	B	C	D
S-27	1240-¾ 603 (600-¾)	1240-1¼ 603 (600-1¼)	1240-1½ 603 (600-1½)	1240-2 603 (600-2)
CIRCLING	1240-1	597 (600-1)	1240-1¾ 597 (600-1¾)	1240-2 597 (600-2)
DME MINIMUMS				
S-27	1120-¾ 483 (500-¾)			1120-1 483 (500-1)
CIRCLING	1140-1 497 (500-1)	1160-1 517 (600-1)	1160-1½ 517 (600-1½)	1200-2 557 (600-2)

# VOR RWY 27