

RNAV (GPS) RWY 9

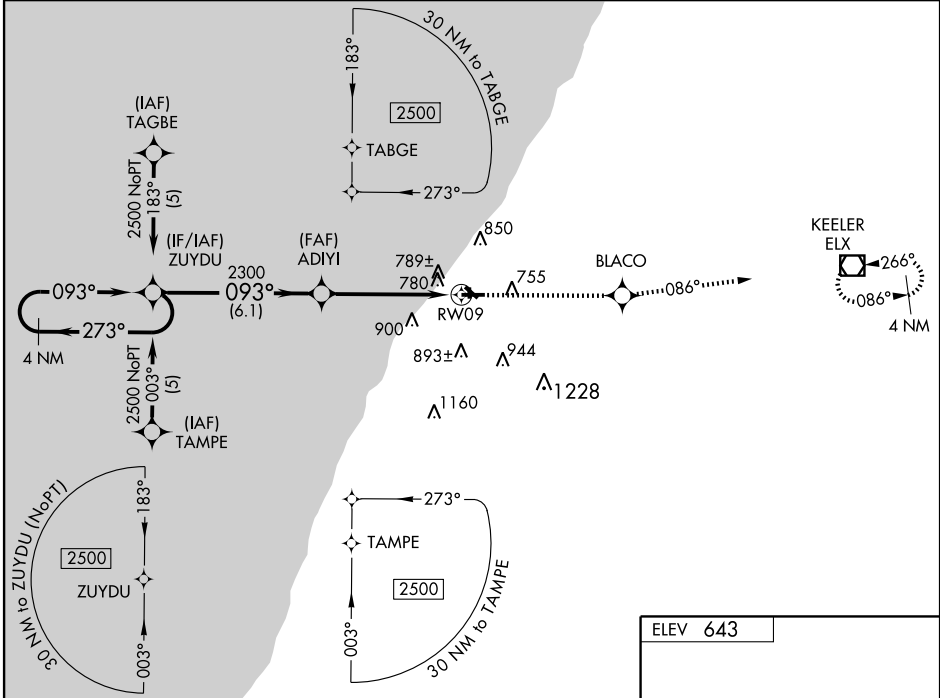
BENTON HARBOR/SOUTHWEST MICHIGAN RGNL (BEH)

WAAS CH 86912 W09A	APP CRS 093°	Rwy Idg 5107 TDZE 630 Apt Elev 643
--	------------------------	---

⚠ Baro-VNAV NA when using South Haven altimeter setting. For uncompensated Baro-VNAV systems, LNAV/VNAV NA below -1.6°C (4°F) or above 47°C (116°F).
⚠ DME/DME RNP-0.3 NA. Visibility reduction by helicopters NA. When local altimeter setting not received, use South Haven altimeter setting and increase all DA/MDA 40 feet and LPV all Cats visibility ¼ mile and LNAV Cat D visibility ¼ mile.

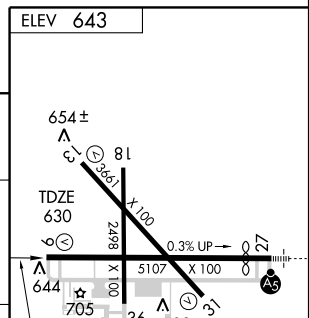
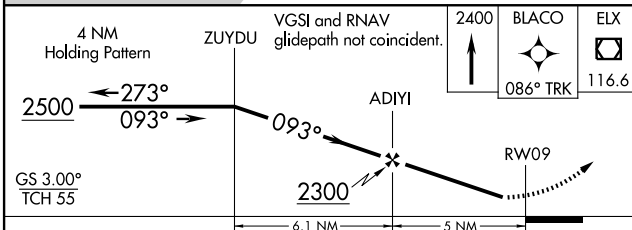
MISSED APPROACH: Climb to 2400 direct BLACO and via 086° track to ELX VOR/DME and hold.

ASOS 121.55	SOUTH BEND APP CON* 118.55 257.8	SOUTH BEND CLNC DEL 119.7	UNICOM 123.0 (CTAF) 0
-----------------------	--	-------------------------------------	---------------------------------



EC-1, 22 OCT 2009 to 19 NOV 2009

EC-1, 22 OCT 2009 to 19 NOV 2009



CATEGORY	A	B	C	D
LPV DA		1019-1¼	389 (400-1¼)	
LNAV/VNAV DA		1101-1¾	471 (500-1¾)	
LNAV MDA	1040-1	410 (500-1)	1040-1¼	410 (500-1¼)
CIRCLING	1120-1	477 (500-1)	1160-1½ 517 (600-1½)	1200-2 557 (600-2)

RNAV (GPS) RWY 9