

DECATUR, ALABAMA

AL-719 (FAA)

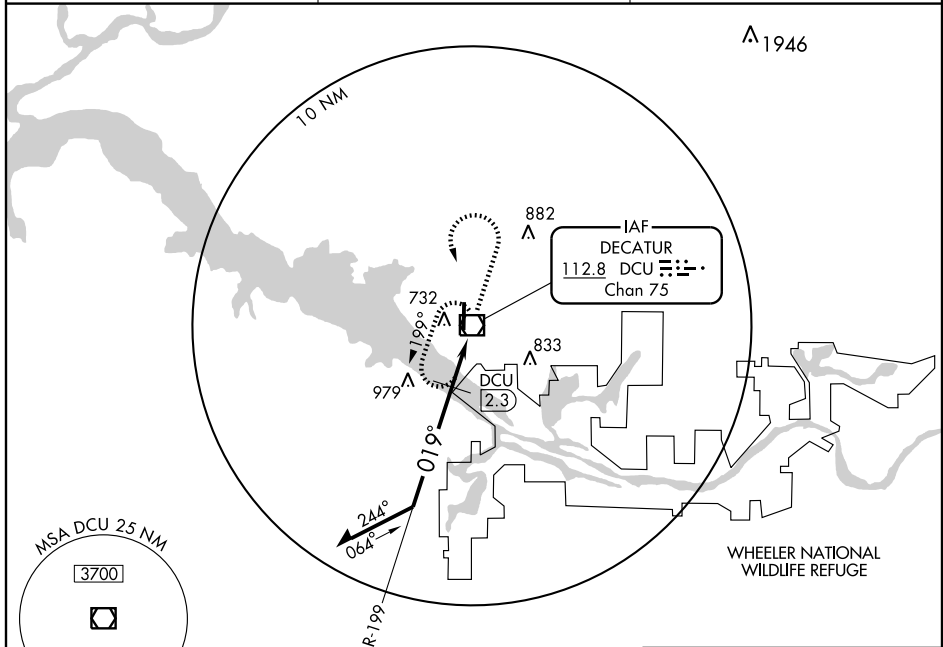
|   |                        |   |
|---|------------------------|---|
| VOR/DME DCU<br><b>112.8</b><br>Chan <b>75</b> | APP CRS<br><b>019°</b> | Rwy Idg <b>6107</b><br>TDZE <b>588</b><br>Apt Elev <b>592</b> |
|---|------------------------|---|

# VOR RWY 36

DECATUR/ PRYOR FIELD RGNL (DCU)

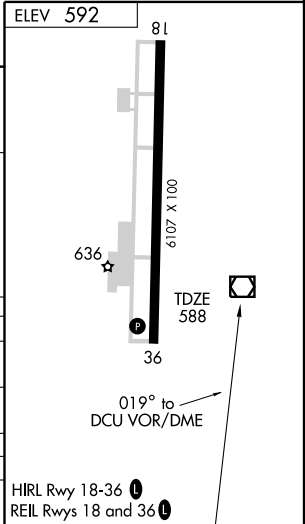
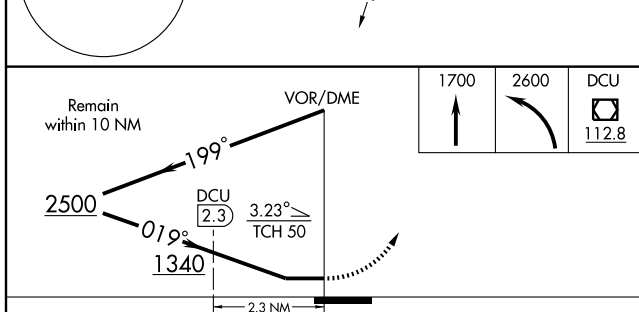
▼ ▲ NA
 MISSED APPROACH: Climb to 1700 then climbing left turn to 2600 direct DCU VOR/DME and hold.

|                        |   |  |
|------------------------|---|--|
| ASOS<br><b>118.375</b> | HUNTSVILLE APP CON ★<br><b>118.05 239.0</b> | UNICOM<br><b>123.075</b> (CTAF) <b>0</b> |
|------------------------|---|--|



SE-4, 22 OCT 2009 to 19 NOV 2009

SE-4, 22 OCT 2009 to 19 NOV 2009



| CATEGORY     | A                     | B                       | C                       | D                       |
|--------------|-----------------------|-------------------------|-------------------------|-------------------------|
| S-36         | 1340-1<br>752 (800-1) | 1340-1¼<br>752 (800-1¼) | 1340-2¼<br>752 (800-2¼) | 1340-2½<br>752 (800-2½) |
| CIRCLING     | 1340-1<br>748 (800-1) | 1340-1¼<br>748 (800-1¼) | 1340-2¼<br>748 (800-2¼) | 1340-2½<br>748 (800-2½) |
| DME MINIMUMS |                       |                         |                         |                         |
| S-36         | 1000-1                | 412 (500-1)             | 1000-1¼                 | 412 (500-1¼)            |
| CIRCLING     | 1060-1                | 468 (500-1)             | 1060-1½<br>468 (500-1½) | 1160-2<br>568 (600-2)   |

DECATUR, ALABAMA  
Amdt 5 09183

34° 39' N - 86° 57' W

# VOR RWY 36