

# RNAV (GPS) RWY 18

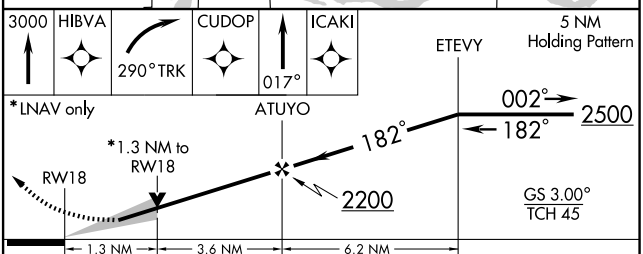
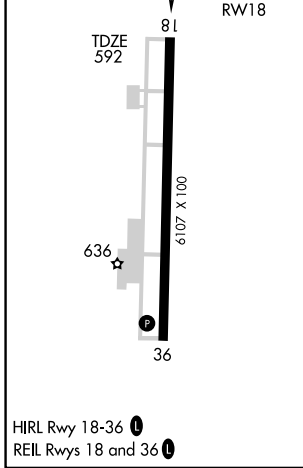
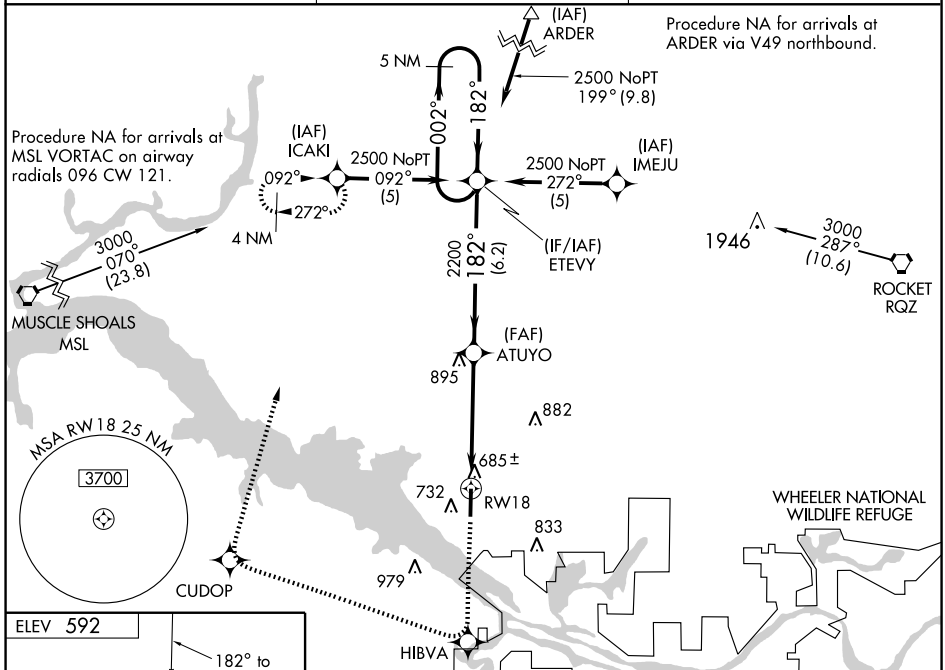
DECATUR/ PRYOR FIELD RGNL (DCU)

WAAS CH <b>82200</b> <b>W18A</b>	APP CRS <b>182°</b>	Rwy Idg TDZE Apt Elev	<b>6107</b> <b>592</b> <b>592</b>
--	------------------------	-----------------------------	---

**⚠** **⚠** DME/DME RNP-0.3 NA. VDP and Baro-VNAV NA when using Huntsville NA when using Huntsville-Carl T. Jones Field altimeter setting. If local altimeter setting not received, use Huntsville Intl-Carl T. Jones Field altimeter setting and increase LPV DA to 867, LNAV/VNAV DA to 967, and increase all MDAs 40 feet. For inoperative MALSR, increase LPV all Cats. visibility to 1. Baro-VNAV NA below -16°C (4°F).

**MISSED APPROACH:**  
Climb to 3000 direct HIBVA and right turn via 290° track to CUDOP and via 017° to ICAKI and hold.

ASOS <b>118.375</b>	HUNTSVILLE APP CON* <b>118.05 239.0</b>	UNICOM <b>123.075</b> (CTAF) <b>0</b>
------------------------	--	--



CATEGORY	A	B	C	D
LPV DA		842-1/2	250 (300-1/2)	
LNAV/VNAV DA		942-3/4	350 (400-3/4)	
LNAV MDA	1040-1/2	448 (500-1/2)	1040-3/4 448 (500-3/4)	1040-1 448 (500-1)
CIRCLING	1040-1 1/4 448 (500-1 1/4)	1060-1 1/4 468 (500-1 1/4)	1060-1 1/2 468 (500-1 1/2)	1160-2 568 (600-2)

SE-4, 22 OCT 2009 to 19 NOV 2009

SE-4, 22 OCT 2009 to 19 NOV 2009