

ALPENA, MICHIGAN

AL-718 (FAA)

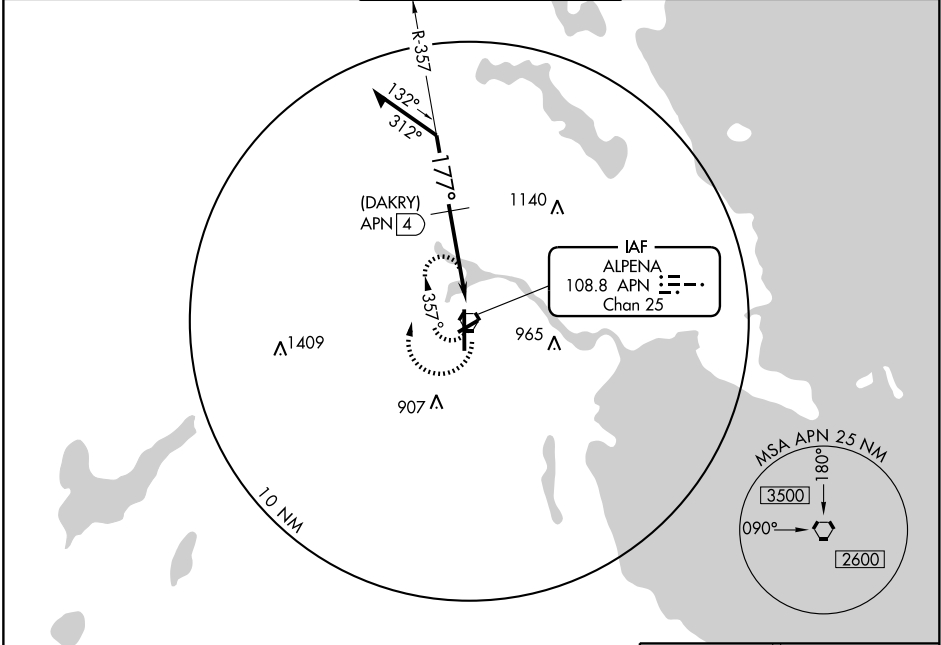
# VOR or GPS RWY 19

ALPENA COUNTY RGNL (APN)

VORTAC APN <b>108.8</b> Chan 25	APP CRS <b>177°</b>	Rwy Idg TDZE Apt Elev	<b>9001</b> <b>683</b> <b>689</b>
---------------------------------------	------------------------	-----------------------------	---

MISSED APPROACH: Climbing right turn to 2400 in APN VORTAC holding pattern.

ASOS <b>120.675</b>	ALPENA APP CON ★ <b>128.425 379.3</b>	ALPENA TOWER ★ <b>121.35 (CTAF) 0 318.1</b>	GND CON <b>121.9 275.8</b>	UNICOM <b>122.95</b>
------------------------	--	--	-------------------------------	-------------------------

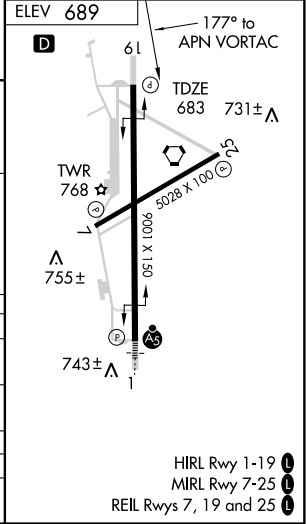


EC-1, 22 OCT 2009 to 19 NOV 2009

EC-1, 22 OCT 2009 to 19 NOV 2009



Remain within 10 NM	VORTAC	
2400	357°	(DAKRY) APN 4
2400	177°	1220
4 NM		



CATEGORY	A	B	C	D
S-19	1220-1	537 (600-1)	1220-1½ 537 (600-1½)	1220-1¾ 537 (600-1¾)
CIRCLING	1220-1	531 (600-1)	1220-1½ 531 (600-1½)	1240-2 551 (600-2)
DME MINIMUMS				
S-19	1100-1	417 (500-1)	1100-1¼	417 (500-1¼)
CIRCLING	1120-1 431 (500-1)	1140-1 451 (500-1)	1140-1½ 451 (500-1½)	1240-2 551 (600-2)

HIRL Rwy 1-19  
MIRL Rwy 7-25  
REIL Rws 7, 19 and 25

ALPENA, MICHIGAN  
Amdt 14B 09295

45°05'N - 83°34'W

# ALPENA COUNTY RGNL (APN)

## VOR or GPS RWY 19