

ALPENA, MICHIGAN

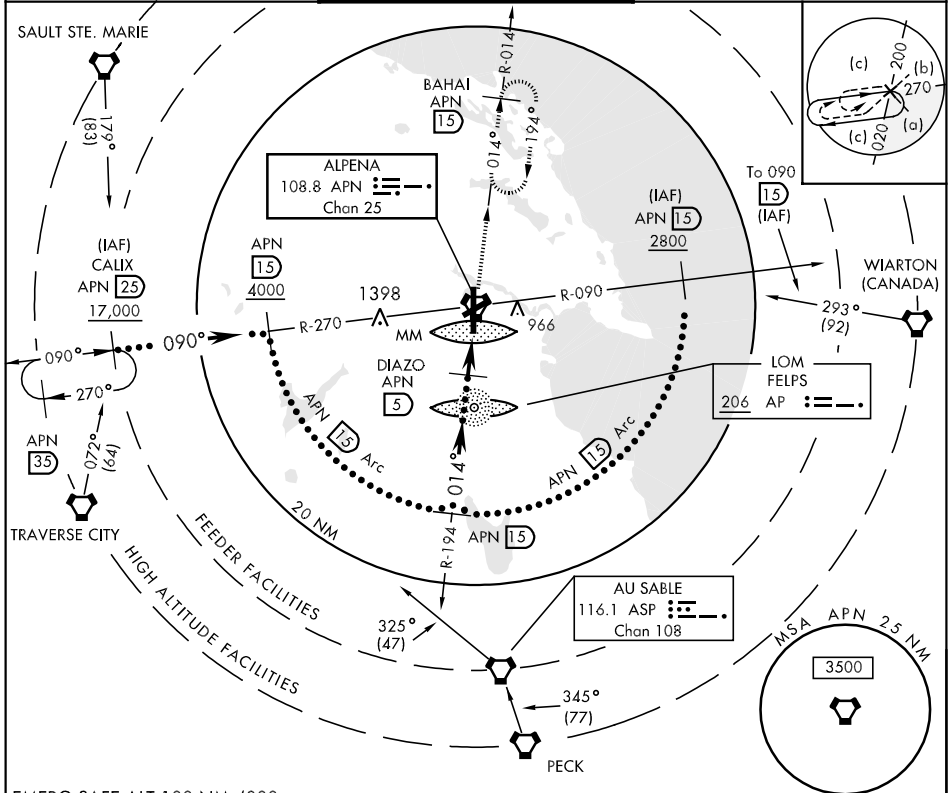
# HI-VOR/DME or TACAN RWY 1

VORTAC APN <b>108.8</b> Chan <b>25</b>	APCH CRS <b>014°</b>	Rwy Idg TDZE Arpt Elev <b>9001</b> <b>685</b> <b>689</b>	JAL-718 [USAF]	ALPENA COUNTY RGNL (KAPN)
--	-------------------------	---	----------------	---------------------------

**MALS** **A5**

MISSED APPROACH: Climb to 5000 via R-014 to BAHAI 15 DME and hold.

ALPENA APP CON <b>128.425 379.3</b>	ALPENA TOWER ★ <b>121.35 (CTAF) 0 318.1</b>	GND CON <b>121.9 275.8</b>
--	--	-------------------------------



EC-1, 22 OCT 2009 to 19 NOV 2009

EC-1, 22 OCT 2009 to 19 NOV 2009

EMERG SAFE ALT 100 NM 4000

R-194 (15) 2800	DIAZO (5)	VORTAC (1.6)	5000 APN R-014	BAHAI (15)	ELEV 689	REIL Rwy 7, 19, and 25	HIRL Rwy 1-19	MIRL Rwy 7-25
CATEGORY	C	D	E					
S-1	1140-¾ 455 (500-¾)	1140-1 455 (500-1)	1280-2 591 (600-2)					
CIRCLING	1140-1½ 451 (500-1½)	1240-2 551 (600-2)	1280-2 591 (600-2)					

ALPENA, MICHIGAN  
09071

45° 05' N-83° 34' W

ALPENA COUNTY RGNL (KAPN)

# HI-VOR/DME or TACAN RWY 1