

# NDB RWY 35

KALAMAZOO/BATTLE CREEK INTL (AZO)

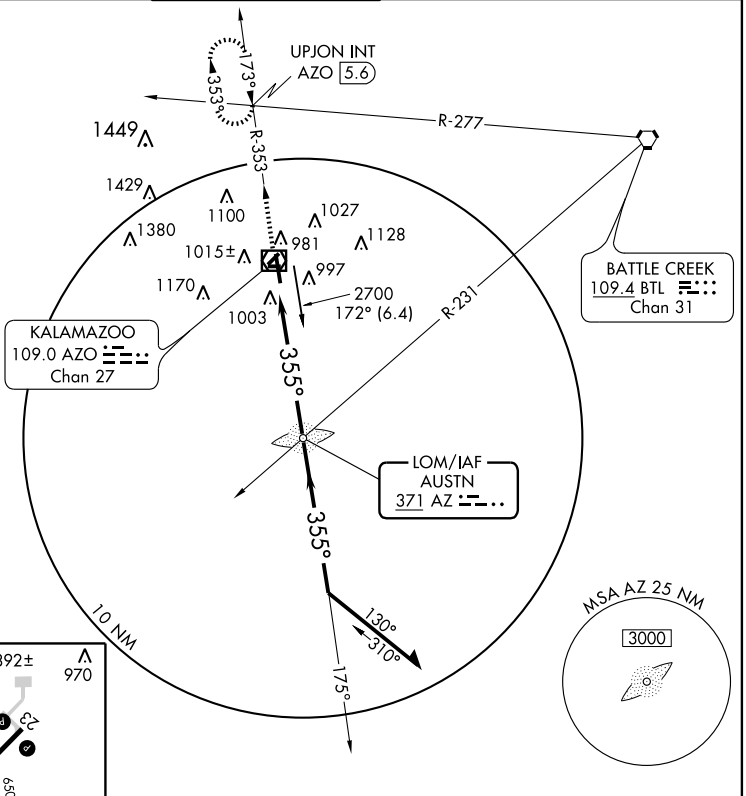
LOM AZ <b>371</b>	APP CRS <b>355°</b>	Rwy Idg <b>6502</b>
		TDZE <b>868</b>
		Apt Elev <b>874</b>

**ASR**

**MALSR**

**MISSED APPROACH:** Climb to 2600 via AZO VOR/DME R-353 to UPJON Int/AZO 5.6 DME and hold.

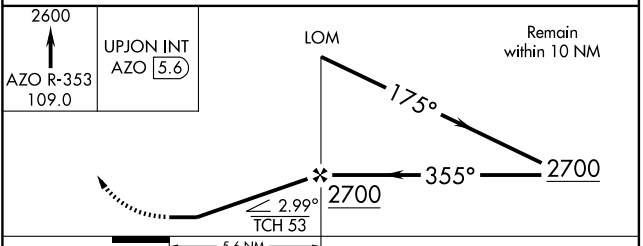
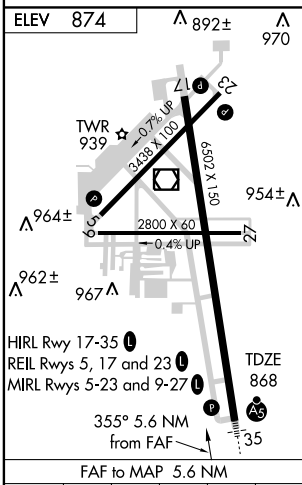
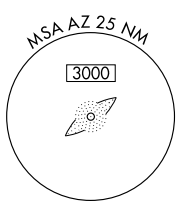
ATIS <b>127.25</b>	KALAMAZOO APP CON★ <b>121.2 340.9</b>	KALAMAZOO TOWER★ <b>118.3 (CTAF) 308.6</b>	GND CON <b>121.9</b>	CLNC DEL <b>121.75</b>	UNICOM <b>122.95</b>
-----------------------	--	---	-------------------------	---------------------------	-------------------------



**BATTLE CREEK**  
109.4 BTL  
Chan 31

**KALAMAZOO**  
109.0 AZO  
Chan 27

**LOM/IAF AUSTN**  
371 AZ



CATEGORY	A	B	C	D
S-35	1320/40	452 (500-¾)		1320/60 452 (500-1¼)
CIRCLING	1380-1	506 (600-1)	1380-1½ 506 (600-1½)	1440-2 566 (600-2)

EC-1, 22 OCT 2009 to 19 NOV 2009

EC-1, 22 OCT 2009 to 19 NOV 2009