

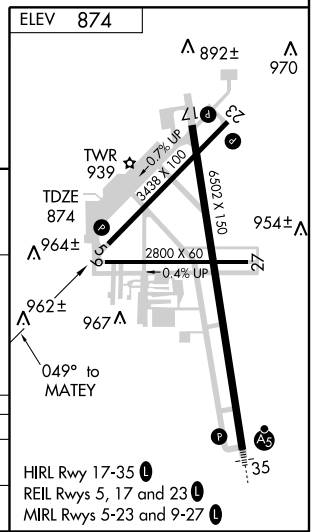
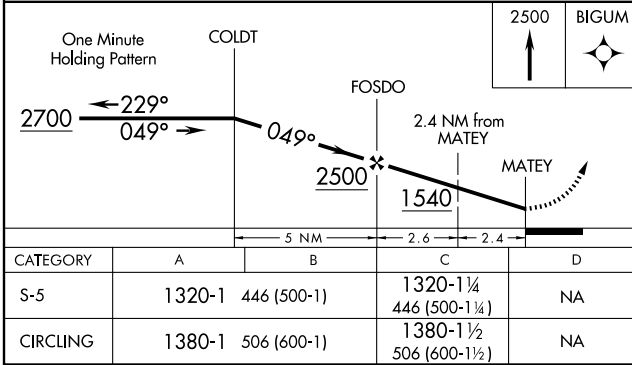
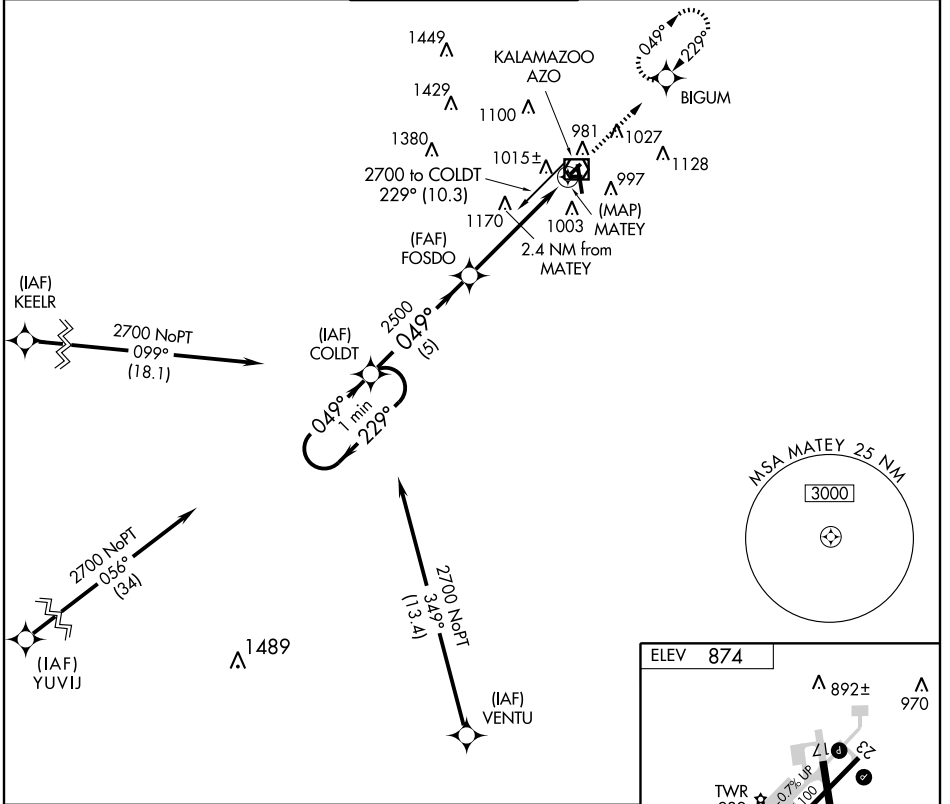
GPS RWY 5

KALAMAZOO/BATTLE CREEK INTL (AZO)

APP CRS 049°	Rwy Idg 3438
	TDZE 874
	Apt Elev 874

NA ASR	When local altimeter setting not received, use Grand Rapids altimeter setting and increase all MDA 120 feet, increase S-5 and Circling Cat C visibility ¼ mile.	MISSED APPROACH: Climb to 2500 direct BIGUM WP and hold.
------------------	---	--

ATIS 127.25	KALAMAZOO APP CON * 121.2 340.9	KALAMAZOO TOWER * 118.3 (CTAF) 308.6	GND CON 121.9	CLNC DEL 121.75	UNICOM 122.95
-----------------------	---	--	-------------------------	---------------------------	-------------------------



EC-1, 22 OCT 2009 to 19 NOV 2009

EC-1, 22 OCT 2009 to 19 NOV 2009