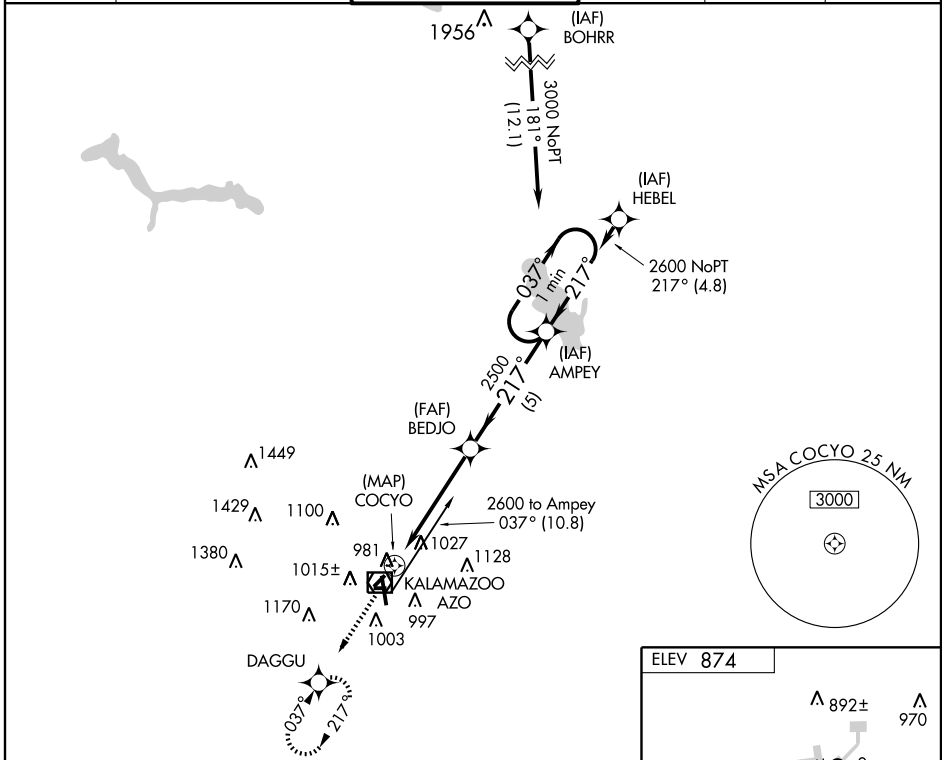


GPS RWY 23
KALAMAZOO/BATTLE CREEK INTL (AZO)

APP CRS 217°	Rwy Idg 3438
	TDZE 874
	Apt Elev 874

NA ASR When local altimeter setting not received, use Grand Rapids altimeter setting. **MISSED APPROACH:** Climb to 2200 direct DAGGU WP and hold.

ATIS 127.25	KALAMAZOO APP CON * 121.2 340.9	KALAMAZOO TOWER * 118.3 (CTAF) 308.6	GND CON 121.9	CLNC DEL 121.75	UNICOM 122.95
-----------------------	---	--	-------------------------	---------------------------	-------------------------



EC-1, 22 OCT 2009 to 19 NOV 2009

EC-1, 22 OCT 2009 to 19 NOV 2009

