

WICHITA FALLS, TEXAS

AL-716 (FAA)

VOR-B

VORTAC SPS 112.7 Chan 74	APP CRS 196°	Rwy Idg TDZE Apt Elev N/A N/A 1005
--	------------------------	--

WICHITA FALLS/ WICHITA VALLEY (F14)

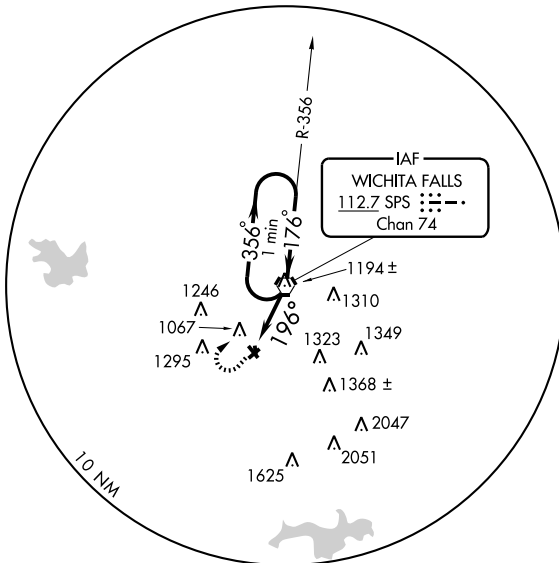
▲ Use Sheppard AFB/Wichita Falls Muni, TX altimeter setting; If not received, use Frederick Rgnl altimeter setting and increase all MDAs 100 feet. Circling to Rwy 4-22 and 16-34 NA.

MISSED APPROACH: Climbing right turn to 2400 direct SPS VORTAC and hold.

SHEPPARD APP CON *
118.2 292.3

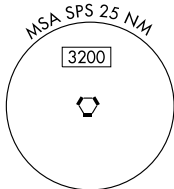
UNICOM
122.8 (CTAF)

2198
▲

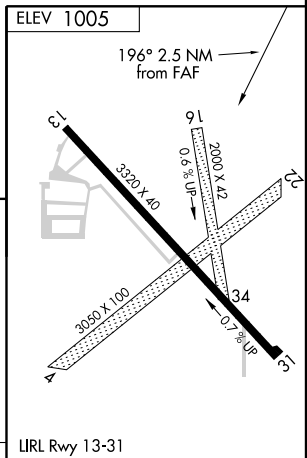
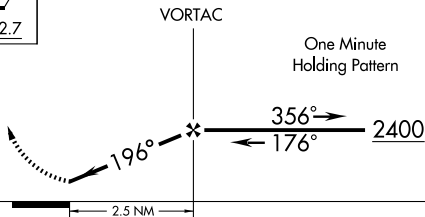


SC-2, 22 OCT 2009 to 19 NOV 2009

SC-2, 22 OCT 2009 to 19 NOV 2009



2400	SPS
	112.7



CATEGORY	A	B	C	D
CIRCLING	1520-1	515 (600-1)	1680-2 675 (700-2)	NA

LIRL Rwy 13-31					
FAF to MAP 2.5 NM					
Knots	60	90	120	150	180
Min:Sec	2:30	1:40	1:15	1:00	0:50

WICHITA FALLS, TEXAS
Amdt 6 09071

33°57'N-98°37'W

WICHITA FALLS/ WICHITA VALLEY (F14)

VOR-B